

TABLE OF CONTENTS

Introduction	3
Safety	3
Utilities Location Diagram	4
SUITMATE® Installation Instructions	5
Wiring Diagram	7
SUITMATE® Exchange Procedure	10
SUITMATE® Maintenance Instructions	12
SUITMATE® Troubleshooting	13
Remove/Replace Mechanical Assemblies	16
SUITMATE® from Wall Mounting Bracket	16
Top Assembly	18
Sub-Top Assembly	20
Lid	22
Riser Cable Assembly.....	24
Drive Unit Assembly	26
Liner	28
Brake Rods, Basket, Hub, and Brake Disc Assembly...	30
Brake Disc.....	32
Brake Lever	34
Brake Pad	36
Shock Mounts.....	38
Shock Bumper Rings	38
Motor From Mounting Plate	40
Replace Electrical Assemblies	42
GFCI	42
Motor Capacitor	44
Thermal Breaker	44
Motor Switch	46
Microswitch.....	48
SUITMATE® Microswitch Adjustment Procedure	51
SUITMATE® Exploded Drawing	53
SUITMATE® Assemblies Chart	54
SUITMATE® Parts and Assemblies List	55
Warranty	59

INTRODUCTION

The SUITMATE is a high-speed swimsuit water extractor. It is powered by a 1/3 horsepower, 115V/60Hz full grounded and fault protected electric motor. The unit weighs approximately 55 pounds.

This manual contains service procedures for the SUITMATE including maintenance information, a troubleshooting guide, a wiring diagram and a parts list.

The SUITMATE should only be worked on by a qualified mechanic-electrician, or maintenance individual.

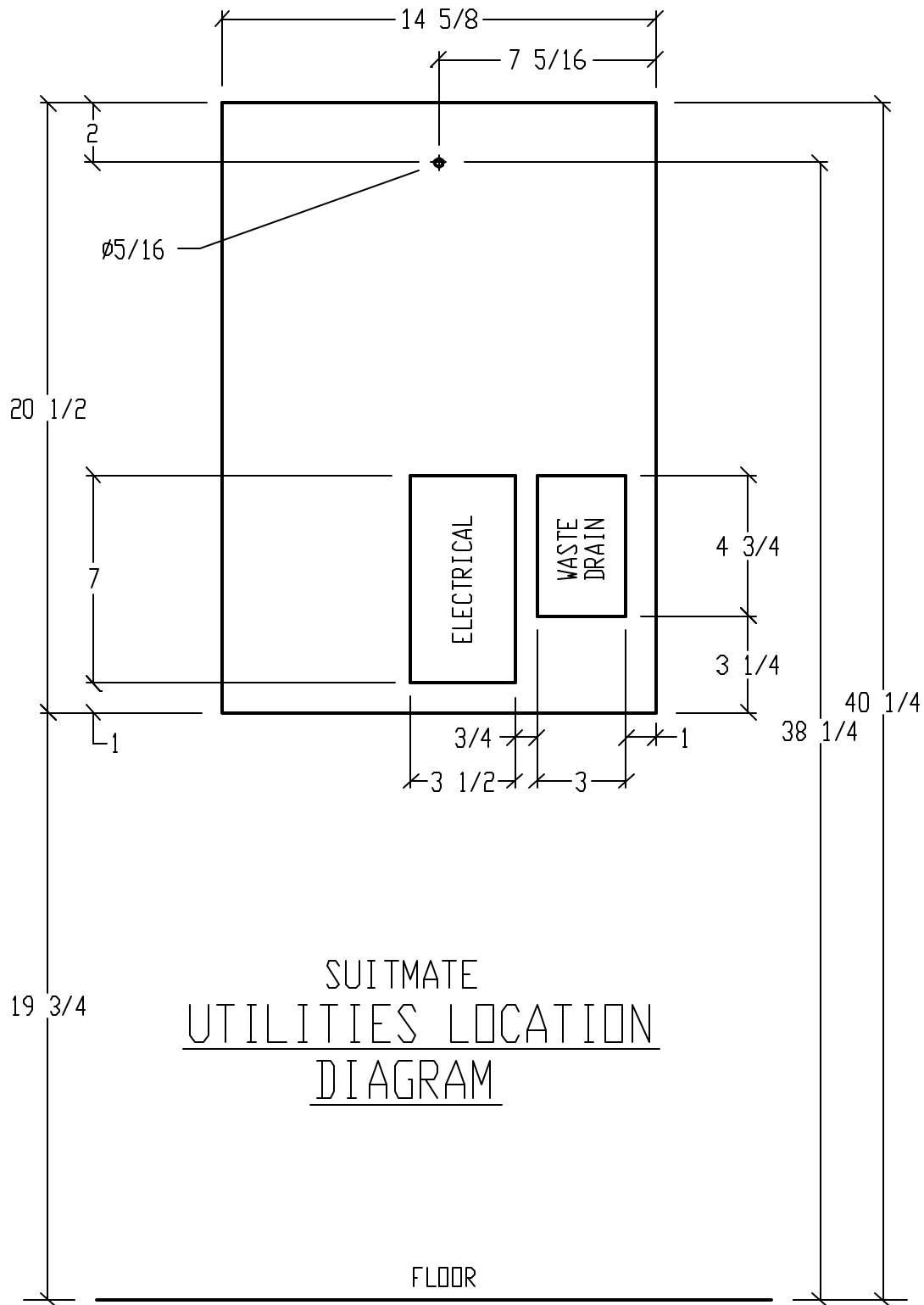
All maintenance and troubleshooting procedures are located in the appropriate sections of this guide.

Follow the service procedures carefully. Always note the location and position of parts and wires before removing them so that reassembly can be done easily and correctly. If no specific reassembly instructions are given, simply reverse the disassembly procedure.

SAFETY

When servicing the SUITMATE, observe the following safety precautions:

- Always turn off the power at the circuit breaker and disconnect the unit before doing any work on the SUITMATE. Simply turning off a switch is *NOT* enough.
- Use only proper tools, test equipment, and work practices when servicing the SUITMATE. If there are questions concerning proper tools, equipment or practices, please call the factory for recommendations at 800-553-3353.
- Due to critical tolerances, use only specified replacement parts. See the SUITMATE PARTS AND ASSEMBLIES section in this manual.



INSTALLATION

The SUITMATE® Swimsuit Water Extractor has been designed and manufactured with safety as our primary consideration. Therefore, it is important that the unit be installed correctly. It is also important that the installation comply with all local building codes and regulations. Please consult your local licensed plumbing and electrical engineers or contractors about your installation. Read the entire INSTALLATION instructions before beginning your installation. Remember: *DO IT RIGHT* and *DO IT SAFE!*

PROPER LOCATION FOR THE SUITMATE

Following is a list of factors to consider in determining a location for the SUITMATE.

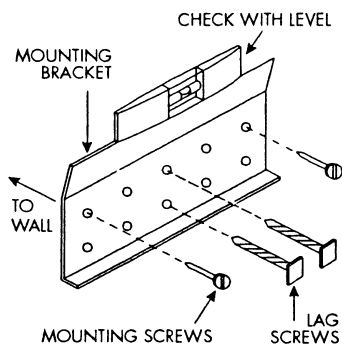
1. The unit should be located in an area that is near where people remove and rinse out their swimsuits.
2. The unit should NOT be located in a cluttered area or where it is exposed to direct shower water or water hose down.
3. The unit should be mounted on a wall structure that will support the unit's approximate 60 pounds hanging weight plus the added weight or pressure of people leaning on the unit. Consult the PROPER WALL MOUNTING section of these instructions to determine an appropriate location.
4. There should be a means to dispose of the waste water from the unit. Consult the PROPER DRAINAGE section of these instructions to determine an appropriate location.
5. The unit should be wired to a 115 volt 20 ampere 60Hz *dedicated circuit*. Consult the PROPER ELECTRICAL CONNECTIONS section of these instructions to determine an appropriate location.

PROPER WALL MOUNTING OF THE SUITMATE

The SUITMATE should be mounted to the wall with the Mounting Bracket that is provided with the unit. The SUITMATE INSTALLATION DIAGRAM (page 4) shows the recommended location for the mounting holes, the electrical service, and the waste water outlet (if utilized). The SUITMATE Mounting Bracket must be secured to a wall stud, or to concrete block or cinder block wall.

WARNING

Anchors in drywall are not sufficient to mount the SUITMATE.



Locating and Securing the Mounting Bracket to the Wall

The recommended height from the floor to the top of the SUITMATE is 42 inches. At least an additional 10 inches of clearance above the SUITMATE is needed for the opening and closing of the lid. This means that the top edge of the Mounting Bracket should be 39 1/2 inches from the floor. Use the SUITMATE INSTALLATION DIAGRAM to determine a location on the wall that provides for adequate clearance, a strong and secure place

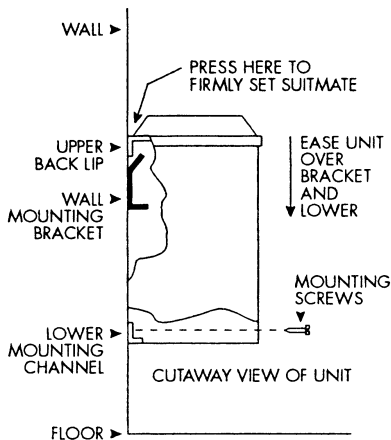
for the Mounting Bracket as well as easy access to the electrical and drainage connections.

WARNING The Mounting Bracket must be level after secured to the wall.

To secure the Mounting Bracket to a stud, center the Bracket on the stud and mark on the wall or the stud the location of the two vertical center holes of the Mounting Bracket. Drill the marked locations with a 1/8 inch drill bit. Make sure the Mounting Bracket will be level after it is secured to the wall. Reposition the Mounting Bracket over the two holes. Drill the outer two holes to receive wall anchors. Install the wall anchors.

Secure the Mounting Bracket to the stud by using two 5/16 x 2 inch lag screws through the two vertical center holes. Make sure the Bracket is level. Finish securing the Bracket with the appropriate fasteners in the outer two holes. For mounting to concrete, etc., use at least four No. 10 or larger screws fastened into appropriate anchors. After the Bracket has been anchored to the wall and the electrical and drainage requirements have been allowed for, the SUITMATE is ready to be mounted to the wall.

Mounting the Suitmate to the Wall



Remove all packaging material from the SUITMATE including material around the Motor and the shipping board on the bottom of the unit. The upper back lip of the SUITMATE should be lowered down and centered on the Bracket. After the unit is centered, push down on the back of the unit to make sure that it is securely wedged onto the Bracket. Make sure the unit is level. If it is not level, remove the unit, adjust the Mounting Bracket and re-hang the unit. A level installation is necessary to minimize vibration and insure proper drainage of waste water. Finish securing the unit to the wall using appropriate fasteners and anchors on the lower mounting channel at the bottom rear of the unit. This will prevent the unit from being lifted from the Bracket or being moved.

PROPER DRAINAGE FOR THE SUITMATE

NOTE: Strictly follow all applicable local plumbing codes and regulations.

To a Floor Drain

Drainage of the waste water to a floor drain should be done ONLY in an area where the floor is normally wet. DO NOT drain water across a floor where people do not expect to encounter a wet and slippery condition. SUITMATE comes with a short flexible floor drain extension tube connected with a stainless steel hose clamp to its drain tail piece.

The drain tube that comes with the unit must not be removed unless the unit is connected to an approved waste water outlet or the factory supplied tube is replaced with another tube according to the following instructions.

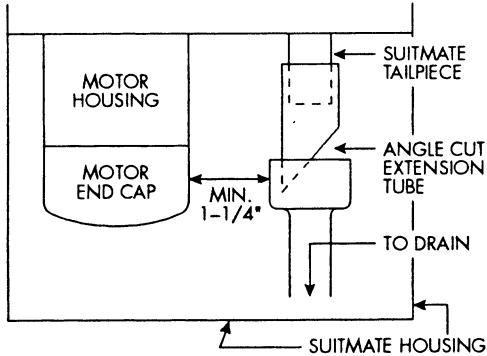
WARNING

Replacing the Factory Drain Tube with a Longer Drain Tube

Use a 1 1/4 inch I.D. drain tube with a smooth interior that will not crimp or collapse. Use the stainless steel hose clamp that is provided with the factory flexible floor drain extension tube to secure the replacement tube to the unit's drain tail piece. Run the drain tube so that it is never higher than the bottom of the SUITMATE and always slopes down. Secure the drain tube to the wall or floor with properly sized "U" clamps so it cannot be maneuvered to trap waste water. Cut off the end of the drain tube on an angle to help prevent it from being blocked by the floor, wall, or some other object. Upon completion of the installation, check to make sure that there is a free flow of water from the drain tube extension.

To an Approved Sanitary Waste Line

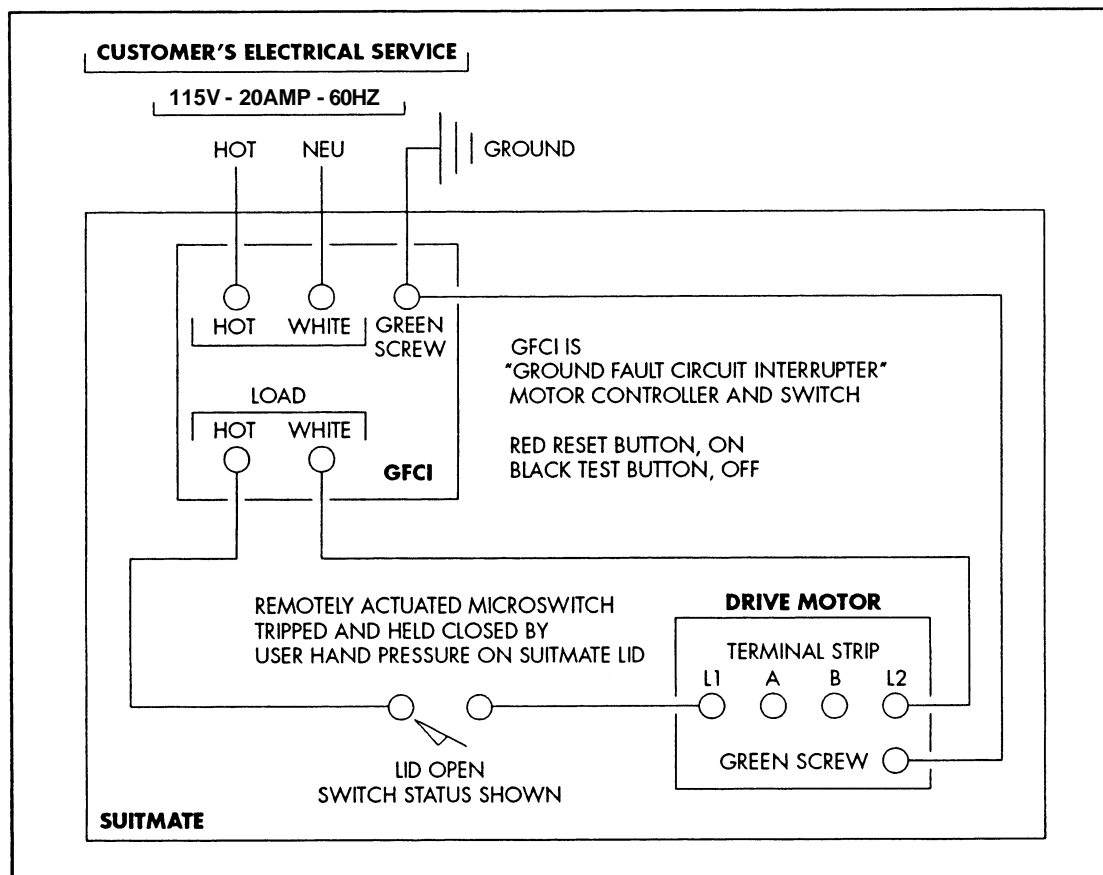
This installation should only be done in accordance with all applicable local plumbing codes and regulations. The unit's 1 1/4 inch O.D. drain tail piece is designed for connection with standard compression type plumbing fittings. There is room inside the housing for the use of a standard "P" type plumbing connection. The waste outlet should be located in the wall behind the unit. The SUITMATE INSTALLATION TEMPLATE shows the appropriate location for the waste duct.



If an open-site drain connection is required and the open site is to be positioned within the SUITMATE housing, locate the top of the receiver pipe below the top of the Motor end cap, and locate the top outer edge of the receiver pipe at least 1 1/4 inch from the body of the Motor. (See also the SUITMATE INSTALLATION TEMPLATE.) Be sure that the cut off end of the drain extension tube is below the top of the receiver with the angle cut facing away from the Motor as illustrated.

PROPER ELECTRICAL CONNECTIONS FOR THE SUITMATE

NOTE: Strictly follow all applicable local electrical codes and regulations.



SUITMATE is equipped with a ground fault circuit interrupter (GFCI) and is designed to be connected to a 115 volt 20 ampere 60 Hz *dedicated circuit* that is protected by a fuse or circuit breaker. A *PLUG-IN INSTALLATION IS NOT ACCEPTABLE*. The utilized circuit must be run to the SUITMATE weatherproof Junction Box which contains the GFCI. A

liquid tight raceway such as Ultralight® Liquid Tight Flexible Conduit (or the equivalent) should be used from the circuit connection to the Junction Box. The SUITMATE INSTALLATION TEMPLATE shows the location of the suggested area behind the unit for the entrance of the electrical raceway that does not interfere with the drainage connection.

WARNING Do not route the raceway where waste water can flow or drip on it.

Remove the cover of the weatherproof Junction Box which contains the GFCI and remove the GFCI mounting screws. The circuit ground conductor must be connected to the green grounding screw located on the GFCI. If no ground is available on the circuit utilized, you *must provide* a proper ground for the SUITMATE. The hot and neutral leads of the power circuit should be connected to the GFCI screw terminals marked "LINE". Connect the hot lead to the terminal marked "HOT" and the neutral lead to the terminal marked "WHITE". After the correct electrical connections have been properly made, remount the GFCI using the screws previously removed. Reinstall the weatherproof Junction Box cover previously removed. This cover provides access to the GFCI "TEST" and "RESET" buttons.

POSTING THE WALL SIGN

It is important that the wall sign included in the INSTALLATION PACKAGE be mounted on the wall above the unit. Locate the bottom edge of the sign six inches above the SUITMATE. At this height the sign will not be blocked when the Lid is raised. It will also serve as a stop to keep the Lid from striking the wall behind the unit.

The sign has an adhesive foam strip around the perimeter of the back side. Be sure the surface that the sign is to be mounted to is clean and dry. Peel off the protective strip to expose the adhesive foam. Without touching the sign to the wall, align the sign six inches above the unit and at its center. Press the sign to the wall and rub firmly over the adhesive portion of the sign.

TESTING AND OPERATION

After the mounting and all connections are complete, test the SUITMATE as follows:

1. Make sure all packaging material is removed from the unit including material around the Motor and the shipping board on the bottom of the unit.
2. Check to see that the Basket is empty and that the Lid moves freely.
3. Press down the Lid and hold down for several seconds. The unit should run smoothly and there should be no excessive vibration or noise.
4. Release and lift the Lid from the down position. The Basket should stop rotating within a second or two.
5. Test the SUITMATE by putting a wet swimsuit in the unit according to the instructions on the underside of the Lid. If there is excessive vibration or noise it is usually caused by the improper loading of the swimsuit. Be sure that the swimsuit is pushed to the bottom of the Basket and that all material is at least two inches below the top of the Basket.

INSTALLATION TROUBLESHOOTING

If the SUITMATE does not operate, check the following:

1. Check to see if there is power to the unit. Check the circuit using an A.C. voltmeter set to the appropriate range; measure across the "LINE" side of the GFCI.
2. Make sure that the GFCI switch is in the "ON" position. The red button must be depressed to turn on the GFCI.
3. Check the connections in the GFCI Junction Box. Be sure there is power on the "LOAD" side of the GFCI.
4. Check the SUITMATE TROUBLESHOOTING section in this manual for additional troubleshooting assistance.

FINISHING THE INSTALLATION

Be sure to save this SUITMATE MANUAL along with all the other materials included in the INSTALLATION PACKAGE envelope. If you did not receive all the materials listed or need additional information, call the Extractor Corporation at 800-553-3353. With proper installation, use, and maintenance your SUITMATE® Swimsuit Water Extractor will provide you with years of trouble-free service.

EXCHANGE PROCEDURE

SUITMATE Exchange Program

This EXCHANGE PROCEDURE is to be used to effect the exchange of SUITMATE units under the "Suitmate Exchange Program".

Note: Retain ALL of the packaging material that the Exchange unit was delivered in.

REMOVAL OF DEFECTIVE SUITMATE

1. Shut off power to the SUITMATE circuit at the power panel.
2. Remove the cover of the weather proof Junction Box which contains the GFCI; remove the GFCI mounting screws; disconnect the power feed wires from the GFCI terminals marked "LINE" and disconnect the ground wire. Refasten the GFCI to the unit. The Exchange unit contains a GFCI.
3. Disconnect the power feed liquid tight raceway from the Junction Box.
4. Loosen the drain tube hose clamp or the P-trap compression fittings and slide the drain tube or P-trap off the unit's tail piece.
5. Remove the lower fasteners anchoring the unit to the wall.
6. Lift the unit up to remove it from the Mounting Bracket

INSTALLATION OF THE EXCHANGE SUITMATE

1. When taking the Exchange unit out of the carton, be careful not to damage the carton as it will be needed to return the defective unit.
2. Hang the Exchange unit on the Mounting Bracket by lowering the upper lip of the SUITMATE Case over the top edge of the Mounting Bracket. Be certain that the Exchange unit is centered on the Mounting Bracket. Ease the SUITMATE all the way down on the Bracket and press down on both sides of the plastic Top at the back of the unit so that it is firmly set in place. Check that the unit is level. If it is not level, remove the unit, adjust the Mounting Bracket, and re-hang the unit. A level installation is necessary to minimize vibration and ensure proper drainage of waste water.
3. Mounting is completed by securing the lower mounting channel to the wall by reinstalling the fasteners removed in step 5 above.
4. Reinstall the drain tube or P-trap that was removed in step 4 above. Secure all connections.
5. Reconnect the power feed liquid tight raceway to the Junction Box, and the power leads and the ground wire that were disconnected above. Be sure the hot lead is connected to the GFCI terminal marked "HOT" and "LINE", and the neutral lead is connected to the GFCI terminal marked "WHITE" and "LINE".

WARNING

For user safety it is imperative that the ground wire conductor be reconnected and the GFCI is operating properly. If no ground wire conductor was provided at the original installation, provide one now.

6. Secure the GFCI and your original weather proof Junction Box cover to the Junction Box.

TESTING OF THE EXCHANGE SUITMATE

After the unit is mounted and the reconnections are complete, test the unit as follows:

1. Make sure all packaging material is removed, including materials around the Motor and the shipping board on the bottom of the unit.
2. Turn on the power to the SUITMATE circuit at the power panel.
3. Check to see that the Basket is empty.
4. Press down on the Lid and hold down for several seconds. The unit should run smoothly and there should be no excessive vibration or noise.
5. Lift the Lid from the down position. The Basket should stop rotating in a few seconds.
6. Test the SUITMATE by putting a wet swimsuit in the unit according to the instructions on the underside of the Lid. Be sure the swimsuit is pushed to the bottom of the Basket and all material is at least two inches below the top of the Basket. If there is excessive vibration or noise it is usually caused by the improper loading of the swimsuit.

INSTALLATION TROUBLE SHOOTING

If the SUITMATE does not operate, check the following:

1. Make sure that there is power to the unit by using an A.C. voltmeter set to the appropriate range.
2. Press the GFCI "RESET" button. The red button is the "RESET" button.
3. Check the connections in the GFCI Junction Box. Check if there is power on the "LOAD" side of the GFCI using an A.C. voltmeter set to the appropriate range.
4. Check the SUITMATE TROUBLESHOOTING section in this manual for additional troubleshooting assistance.

PACKAGING THE DEFECTIVE SUITMATE FOR RETURN

1. Please use all packaging materials used with the Exchange unit.
2. Use the cardboard Motor sleeve and be sure it is properly installed around the Motor. Check that the styrofoam Motor prop is in the cardboard sleeve and under the Motor.
3. It is essential to secure the bottom plywood support to the defective unit with the screws provided with the Exchange unit.
4. Place the unit Case sleeve into the shipping carton first with the plain end nesting down into the bottom folded supports. The end of the sleeve with the flaps should be at the top. Lower the defective unit into the sleeve.
5. Place the styrofoam Lid prop under the Lid.
6. Insert the two folded cardboard supports on top of the unit at 90° to each other.
7. Close and seal the carton with packaging tape.
8. Affix the prepaid UPS label to the carton and give the packaged carton to UPS.
9. For questions, call the Extractor Corporation at 800-553-3353.

We hope that the Exchange Program has worked satisfactorily for you and we would appreciate any comments or suggestions you might have to help us improve our service.

MAINTENANCE

These instructions are designed to keep your SUITMATE clean and operating properly. The procedures should be followed at the recommended frequencies.

WEEKLY

1. Inspection

Pull the Basket to the side and check with a flashlight for trapped debris such as straps, strings, bathing caps, etc., inside the SUITMATE. If foreign objects or debris are found, remove them with a coat hanger or other implement.

WARNING *Never use flammable solvents in or on the SUITMATE*

2. Hygienic Cleaning

- A. Mix a disinfecting cleaner at recommended strength in a 1/2 gallon bucket of water.
- B. Clean the inside of the unit by spinning a small soft hand towel soaked in the cleaning water. Repeat two or three times.
- C. Use the spun towel to wipe down the Lid, plastic Top, sides and Basket.

WARNING *When cleaning around the unit, do not allow water to splash up under the unit as water can get into the Motor and damage it.*

3. Flushing

- A. If your unit uses a drain hose or a P-trap, disconnect it from the unit's drain tail piece and inspect it for any obstructions.
- B. With the drain hose or P-trap removed, place an empty bucket (1-2 gallons) under the tail piece to catch the flush discharge.
- C. Slowly pour 1/2 gallon or less of cleaner water (use the disinfecting cleaner water from step A in "Hygienic Cleaning" above for this procedure) into the top opening of your unit. If the unit's drainage channels are open, the full amount of water poured into the unit should flow into the bucket within a few seconds. Check the discharge water for debris.
- D. Repeat the 1/2 gallon flushes with fresh water until a free flow of water is established and the discharge water is clear of debris.
- E. If you cannot establish a free flow of water or if the discharge water spills out from under the unit, the tail piece is plugged or the drain channels are blocked. Locate the blockage by pushing the Basket aside with one hand and, with a flashlight, determine where the blockage is and remove it. Repeat FLUSHING steps C and D.
- F. Reinstall the disconnected drain hose or P-trap.

MONTHLY

1. Case and Top care

- A. Clean the black plastic Top with Armor All® (or it's equivalent).
- B. Clean and polish the stainless steel Case with Liquid Gold® (or it's equivalent). If flat rust or stains are present use a medium grade steel wool to remove them. Be sure to rub with the grain of the Case (up and down - not sideways). Follow with the Liquid Gold® for cleaning and polishing.

2. Testing the GFCI

Test the GFCI and record the results. The "TEST" and "RESET" buttons are on the face of the GFCI under the flip cover of the weatherproof Junction Box in the rear of the unit.

If the unit does not operate, check the TROUBLESHOOTING section in this manual. If you have any questions or problems, please call the Extractor Corporation at 800-553-3353.

TROUBLESHOOTING

If you are having problems with your SUITMATE, please read through the numbered questions below to see if the condition you are experiencing is described and answered. If you still have difficulty or wish to participate in the Exchange Program, call the Extractor Corporation at 800-553-3353.

1. Is the unit dead? No sound, hum, etc., when the Lid is held down?

NO. Go to question 2.

YES. Is there power to the unit?

YES. Go to Question 1.A

NO. To make sure there is power to the unit, use an A.C. voltmeter set to the appropriate range and measure across the "LINE" side of the GFCI.

1.A Is the GFCI tripped out?

YES. Reset the GFCI by pressing the red button

NO. Go to Question 1.B.

1.B Is the Microswitch working?

Test the Microswitch by slowly depressing the Lid and listening for a faint click.

YES. There is some other problem with the unit and an Exchange may be recommended.

NO. The Microswitch might be out of adjustment. Consult the SUITMATE MICROSWITCH ADJUSTMENT PROCEDURE in this manual.

2. Does the unit hum, but not operate, when the Lid is held down?

NO. Go to Question 3.

YES. Does the Basket spin freely? Test by depressing the Brake Rods manually and trying to spin the Basket.

YES. There is some other problem with the unit and an Exchange may be recommended.

NO. Something may be obstructing the Basket. Pull the Basket to the side and, with a flashlight, look for an obstruction. Remove the obstruction. If the obstruction cannot be removed, an Exchange may be recommended.

3. Does the Unit Leak?

NO. Go to Question 4.

YES. There is probably an obstruction of the drain hose or drain channel. Remove the drain hose and make sure it is not plugged. The drain channel is a two inch U-channel that runs around the perimeter of the interior of the unit. Check for an obstruction by pulling the Basket to the side and, with a flashlight, look for something blocking the drain channel or hose. If foreign objects or debris are found, remove them with a coat hanger or other implement. If the unit still leaks an Exchange may be recommended.

4. Does the unit operate intermittently?

NO. Go to Question 5.

YES. Does the Basket spin freely? Test by depressing the Brake Rods manually and trying to spin the Basket.

YES. The Motor Thermal Breaker may be faulty.

NO. There may be a partial obstruction of the Basket causing the Motor to overheat and the Motor Thermal Breaker to kick out. Pull the Basket to the side and, with a flashlight, look for an obstruction. Remove the obstruction. If the obstruction cannot be removed, and Exchange may be recommended.

5. Does the GFCI keep tripping out?

NO. Go to Question 6.

YES. Is the unit connected to a 115 volt 20 ampere 60Hz *dedicated circuit*?

NO. Provide a 115 volt 20 ampere 60Hz *dedicated circuit*

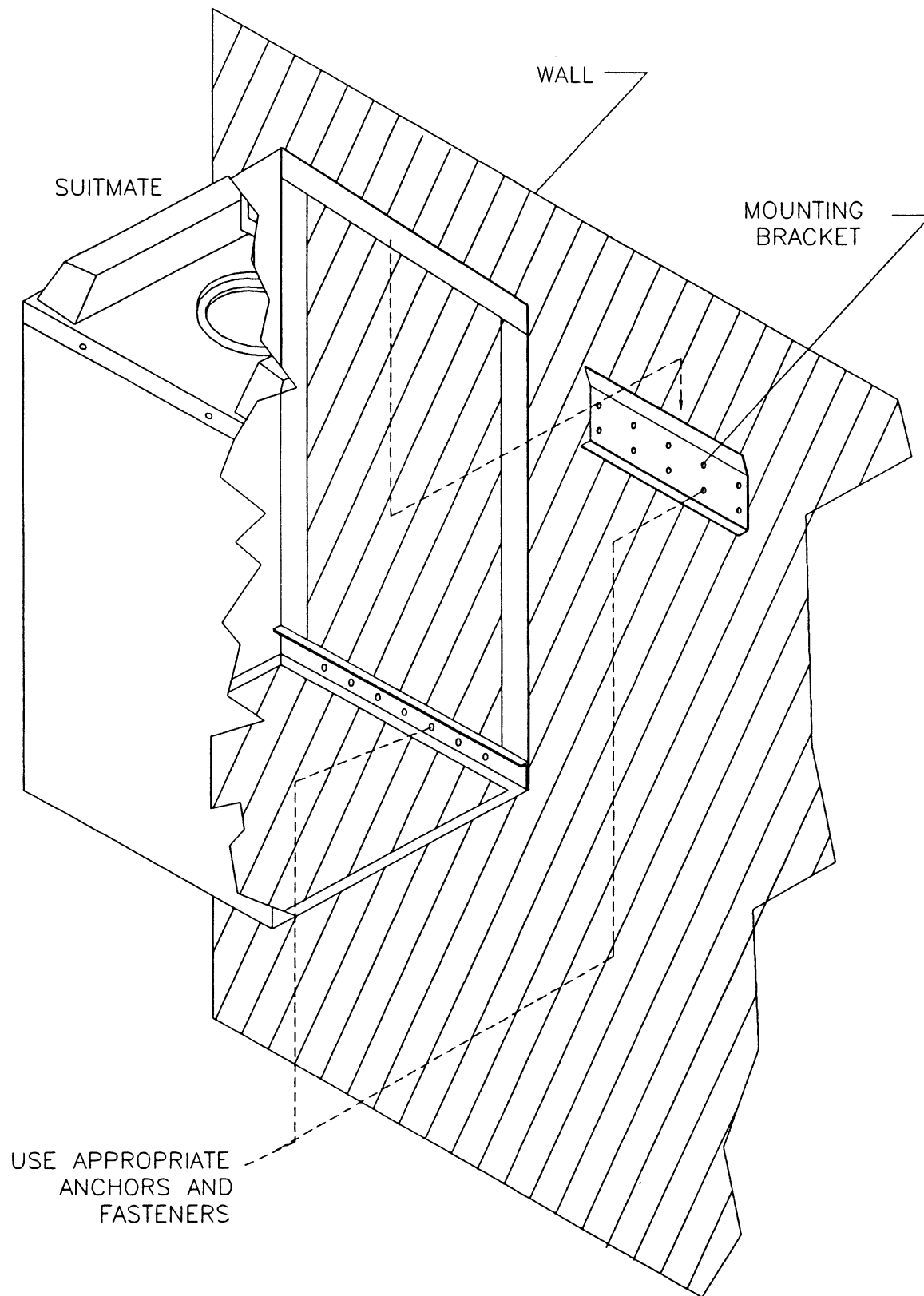
YES. The GFCI may be faulty. Check the GFCI with a AC Voltmeter set to the correct range, or by bypassing the GFCI. If the unit does not kick out the main circuit breaker when bypassing the GFCI, the GFCI is probably faulty and should be replaced. If the GFCI is not faulty, an Exchange may be recommended.

6. Does the unit make excessive noise?

YES. The unit may not be operated properly. Test by putting a swimsuit in the Basket and, pushing it all the way down, make sure it is evenly distributed in the bottom. Operate the unit. If the unit is still excessively noisy, and Exchange may be recommended.

NO.

If these questions have not led to a satisfactory answer to the problem with the SUITMATE, please call the Extractor Corporation at 800-553-3353. We want you and your patrons to have the benefits of a smoothly operating SUITMATE® Swimsuit Water Extractor.



MECHANICAL ASSEMBLIES

Note: Always turn off the power at the circuit breaker and disconnect the electrical connections before doing any work on the SUITMATE. Simply turning off a switch is NOT enough. Use only proper tools, test equipment, and work practices when servicing the SUITMATE.

If there are questions concerning proper tools, equipment or practices, please call the factory for recommendations at 800-553-3353. Due to critical tolerances, use only specified replacement parts. (See the SUITMATE PARTS AND ASSEMBLIES section in this manual.) Some disassembly and assembly procedures have not been included as the procedures would seem to be self-evident.

Do this FIRST

- Turn off the main electrical power to the unit
 - Make sure you have all the necessary parts and fasteners
-

REMOVE SUITMATE FROM WALL MOUNTING

1. Shut off the power to the SUITMATE circuit at the power panel.

CAUTION! Make sure the main electrical power to the unit is turned off before beginning work on the SUITMATE.

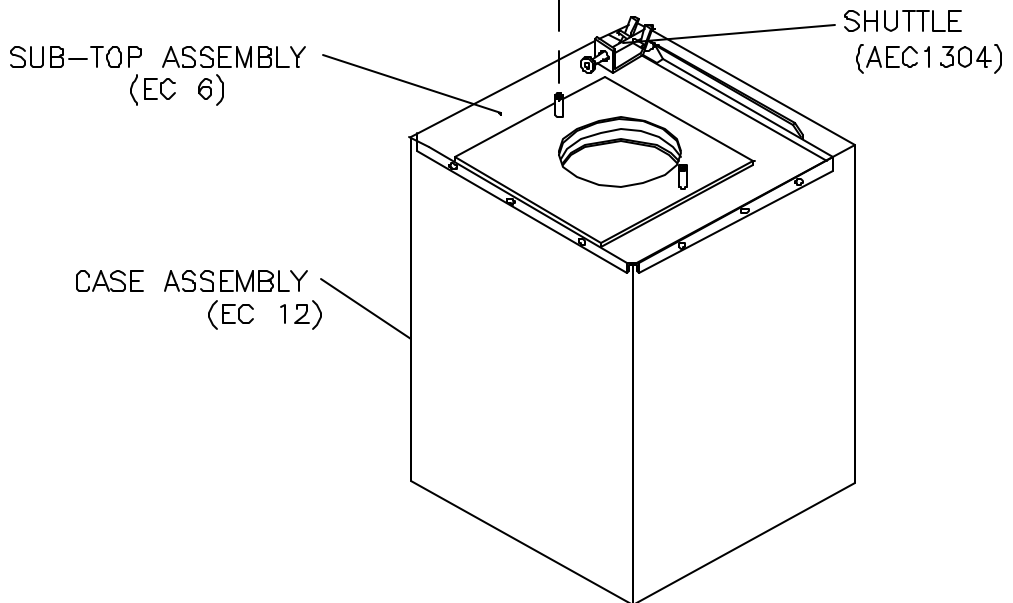
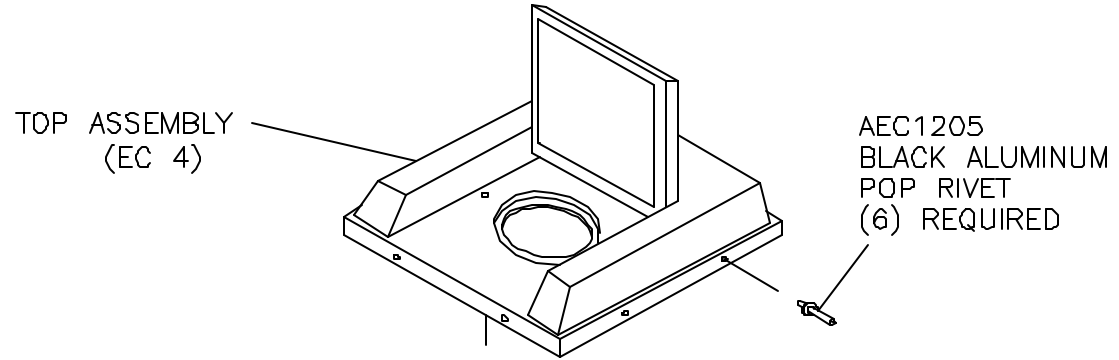
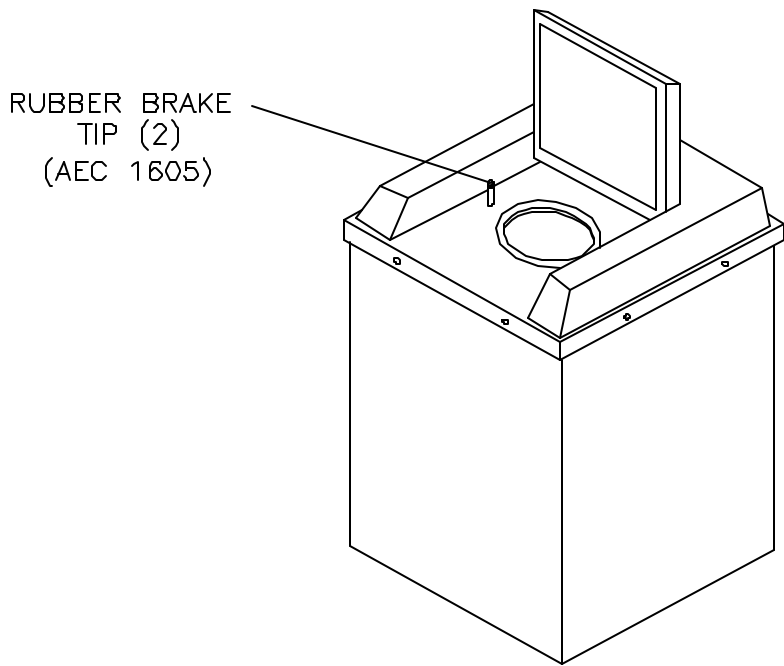
2. If the SUITMATE was installed with hard plumbing (P-trap), disconnect the waste outlet from the unit.
3. Remove the cover of the weatherproof Junction Box which contains the GFCI; remove the GFCI mounting screws; disconnect the power feed lines from the GFCI terminals marked "LINE" and disconnect the ground wire. Leave the GFCI fastened to the unit. Retain the weatherproof Junction Box cover and mounting screws, and the GFCI mounting screws, for reinstallation.
4. Disconnect the power feed liquid tight raceway from the Junction Box.
5. Remove the lower fasteners anchoring the unit to the wall.
6. Remove the SUITMATE from the Mounting Bracket by firmly grasping the sides of the Case bottom and gently lifting straight up until the unit clears the upper back lip of the Mounting Bracket. Take the unit to a work bench.

REINSTALL THE SUITMATE

CAUTION! Make sure the main electrical power to the unit is turned off before beginning work on the SUITMATE.

Return the SUITMATE unit to its proper location and reconnect the unit by reversing the above procedure.

Note: Make sure the unit is level. If it is not level, remove the unit, adjust the Mounting Bracket and re-hang the unit. A level installation is necessary to minimize vibration and insure proper drainage of waste water.



Do this FIRST

- Make sure you have all the necessary parts and fasteners
 - Remove SUITMATE from Wall Mounting
-

REMOVE THE TOP ASSEMBLY

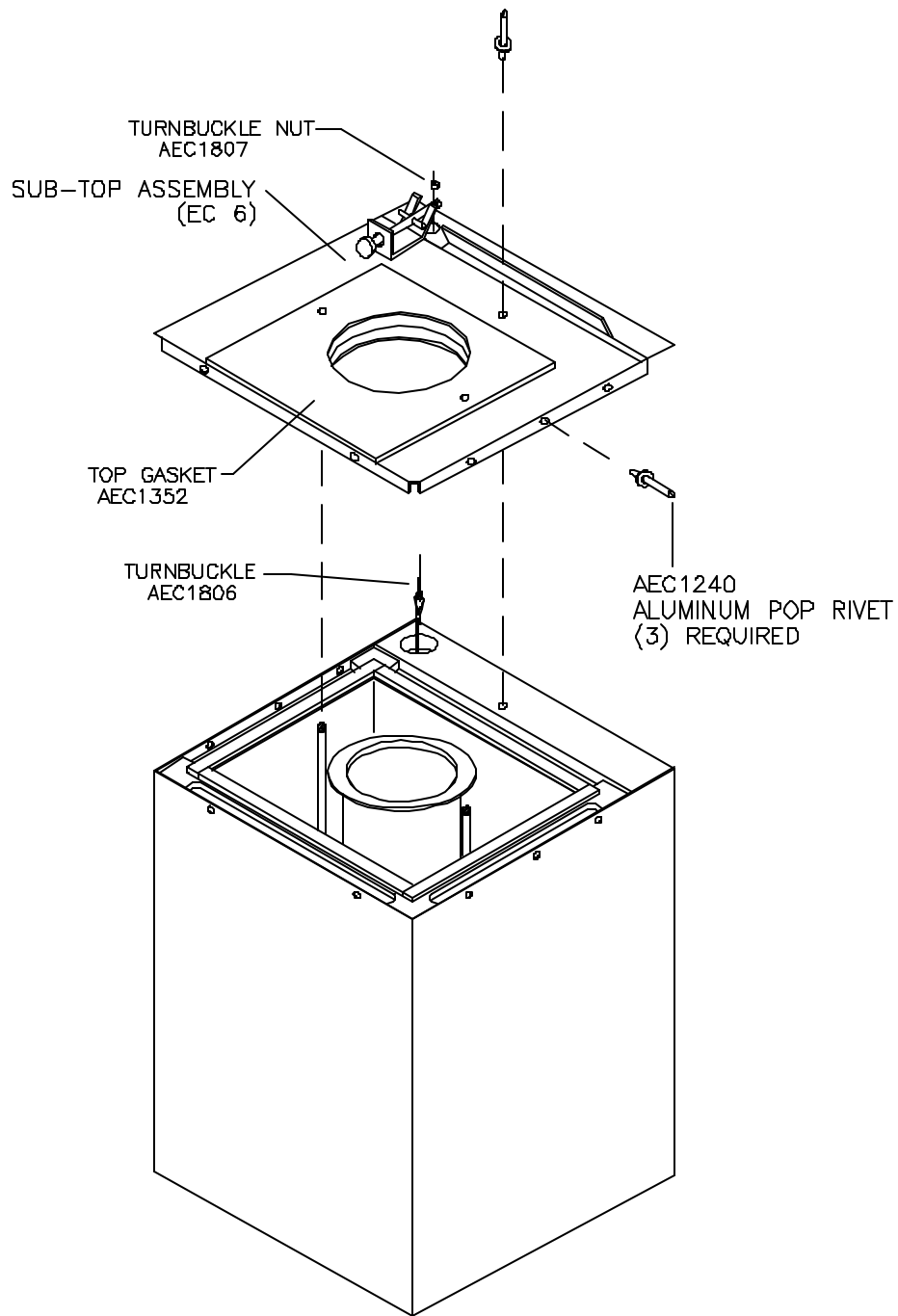
1. Place the SUITMATE unit in an upright position.
2. Lift the Lid. Remove the Rubber Brake Tips from the 2 Brake Rods.
3. Remove the 6 rivets from around the outer edge of the black plastic Top.
 - Punch out the center of each rivet with a small drift punch.
 - Drill out each rivet.
Note: Make sure the drill bit does not reach a depth of more than 1/2 inch to avoid damaging the plastic liner.
 - Chisel off the rivet heads. Make sure the rivets are completely removed.
Note: the Sub-Top Assembly MUST be removed to take out any rivet debris inside the unit.
4. Separate the black plastic Top from the unit. Remove the Top by grasping the sides and lifting straight up.
5. Be careful not to bump the Riser Cable Assembly on the Sub-Top. Set Top aside for reassembly later.

REPLACE TOP ASSEMBLY

Note: Consult the SUITMATE PARTS AND ASSEMBLIES section in this manual to determine the exact parts and fasteners that will be required.

1. Place the SUITMATE unit in an upright position.
2. Lift the Lid on the Top Assembly and locate the two Brake Rod holes in the Top and align them with the Brake Rods. Push the Top down over the Brake Rods.
3. Align the 6 holes in the lower edge of the Top with the corresponding 6 holes in the Case.
4. Fasten the Top to the Case with 6 rivets.
5. Replace the Rubber Brake Tips.

Note: Check the Microswitch alignment by following the SUITMATE MICROSWITCH ADJUSTMENT PROCEDURE section in this manual.



Do this FIRST

- Make sure you have all the necessary parts and fasteners
 - Remove SUITMATE from Wall Mounting
 - Remove Top Assembly
-

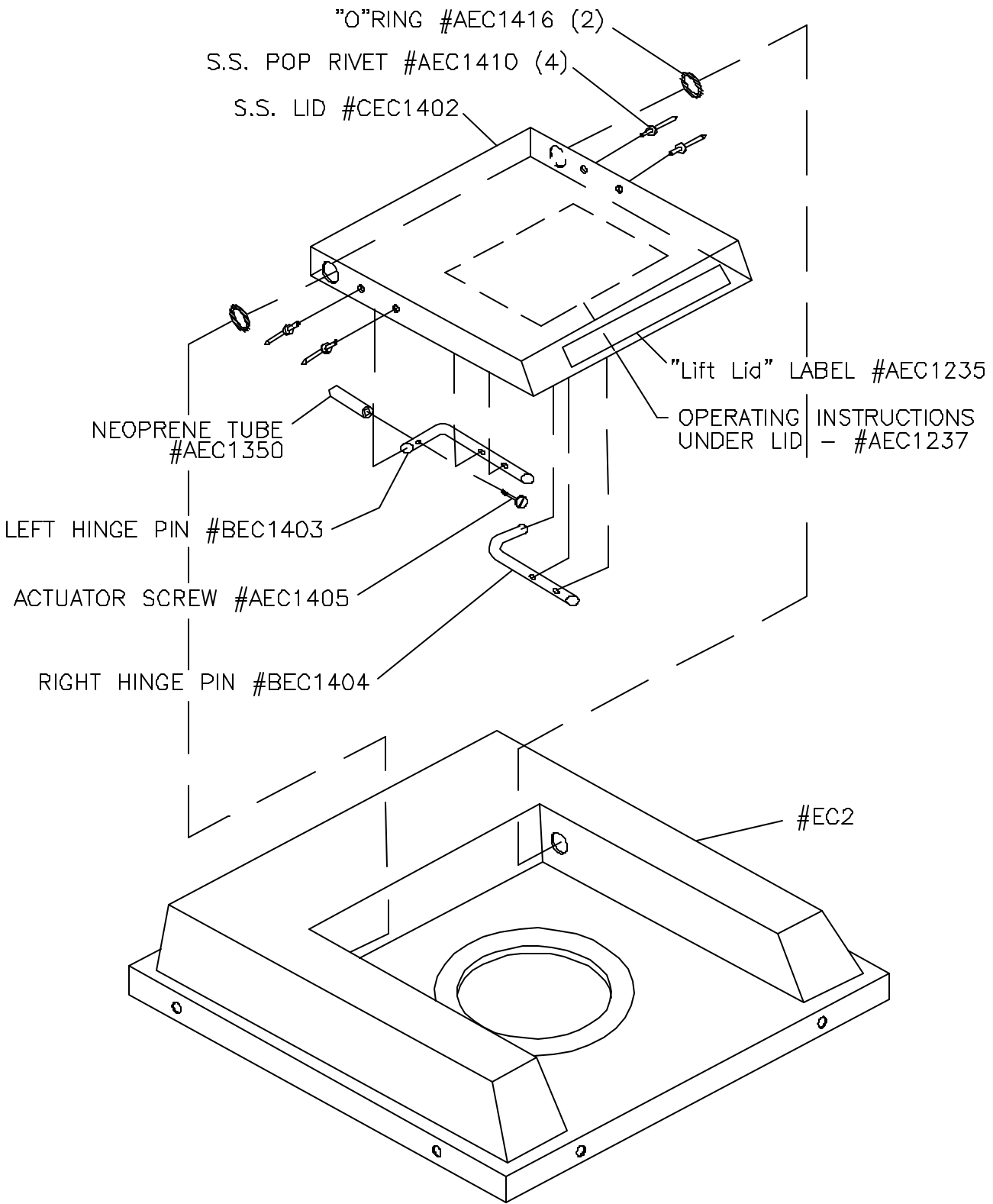
REMOVE SUB-TOP ASSEMBLY

1. Place the SUITMATE unit in an upright position.
2. Remove the nut from the turnbuckle which is attached to the Riser Cable. Set the nut aside for reassembly later.
3. Pull the Riser Cable with turnbuckle down out of the hole in the riser shuttle.
4. Remove the 2 rivets around the outer edge of the Sub-Top and the one rivet on the top.
 - Punch out the center of each rivet with a small drift punch.
 - Drill out each rivet.
Note: Make sure the drill bit does not reach a depth of more than 1/2 inch to avoid damaging the plastic liner.
 - Chisel off the rivet heads. Make sure the rivets are completely removed.
5. Separate the Sub-Top from the SUITMATE. Remove the Sub-Top by grasping the sides and lifting straight up.
6. Remove rivet debris and any other foreign objects from the Liner.

REPLACE SUB-TOP ASSEMBLY

Note: Consult the SUITMATE PARTS AND SUB-ASSEMBLIES section in this manual to determine the exact parts and fasteners that will be required.

1. Locate the 2 Brake Rod holes in the Sub-Top gasket and align them with the Brake Rods. Push the Sub-Top down over the Brake Rods.
2. Align the 3 holes in the Sub-Top (one on each side and one on the top) with the respective holes in the Case.
Note: Make sure that the lip of the Sub-Top is outside the Case.
3. Pop rivet the Sub-Top to the Case.



Do this FIRST

- Make sure you have all the necessary parts and fasteners
 - Remove SUITMATE from Wall Mounting
 - Remove Top Assembly
 - Remove Sub-Top Assembly
-

REMOVE LID

1. Place the Top Assembly upside down.
2. Remove neoprene tube.
3. Unscrew the actuator screw from the left hinge pin.
4. Remove the 2 rivets (top and bottom) from the left hinge pin.
 - Punch out the center of each rivet with a small drift punch.
 - Drill out each rivet.
 - Chisel off the rivet heads.
5. Remove the hinge pin through the metal Lid. Set the hinge aside for reassembly later.
6. Remove the Lid from the Top Assembly.

Note: A rubber O-ring is located on each hinge between the metal Lid and the plastic Top. Set the O-rings aside for reassembly later.

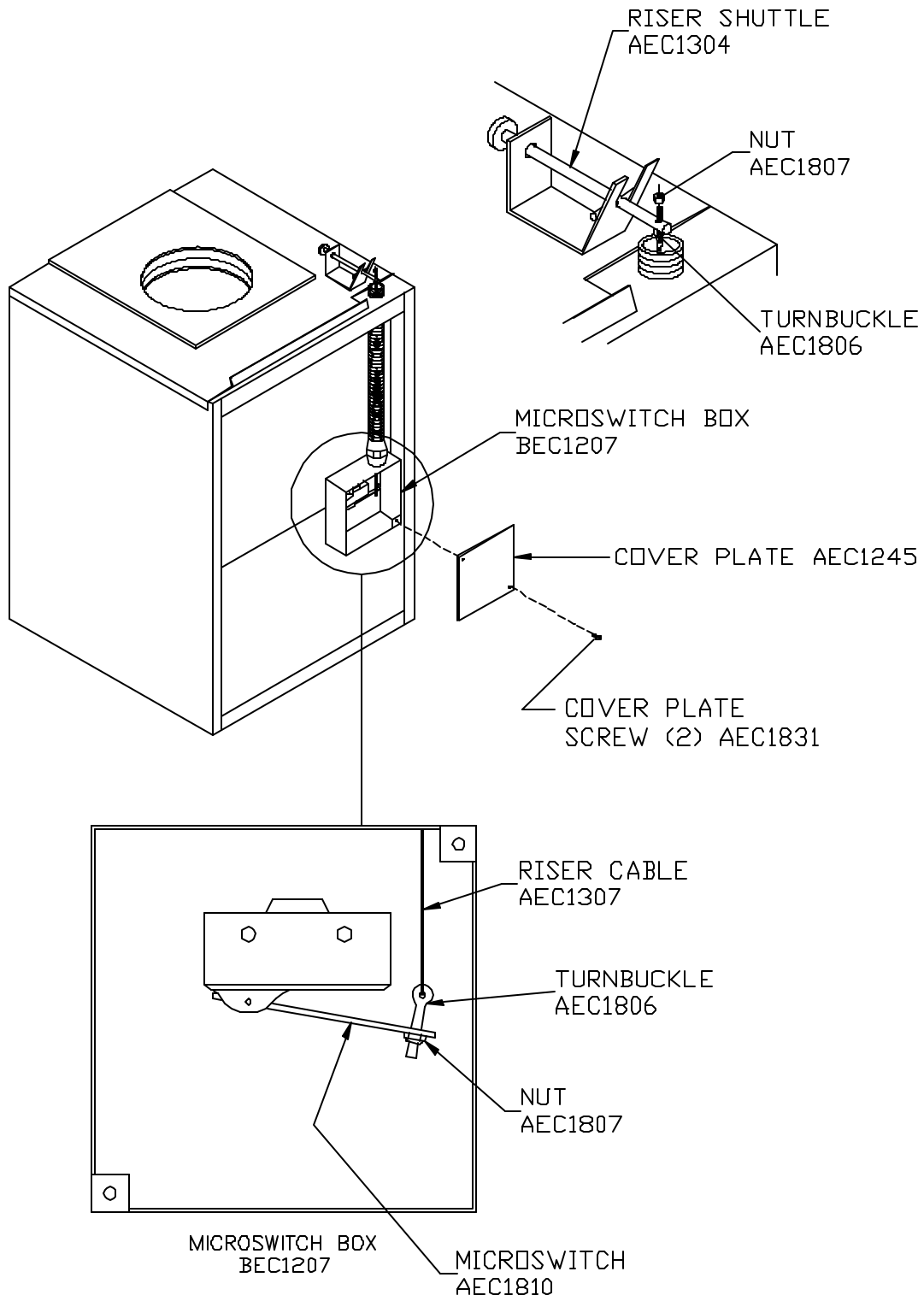
REPLACE LID

Note: Consult the SUITMATE PARTS AND ASSEMBLIES section in this manual to determine the exact parts and fasteners that will be required.

1. Insert the right hinge pin into the Top and then insert the left hinge pin through the Lid and into the Top

Note: Make sure that you have reinstalled the O-ring on both hinge pins.
2. Rivet the left hinge pin to the Lid.
3. Screw in the new actuator screw (see illustration).

Note: Use Loctite "R" (or similar) to secure the actuator screw.
4. Put a new neoprene tube onto a new actuator screw.



Do this FIRST

- Make sure you have all the necessary parts and fasteners
 - Remove SUITMATE from Wall Mounting
 - Remove Top Assembly
-

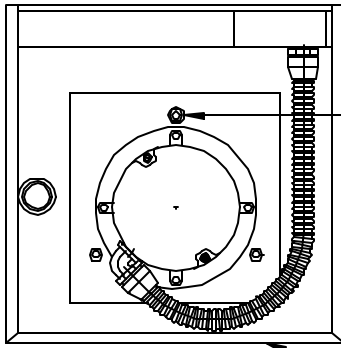
REMOVE RISER CABLE ASSEMBLY

1. Place the SUITMATE in an upright position with the back of the unit facing out.
2. Remove the Microswitch Box cover. The cover is held on with 2 screws. Remove the cover and screws and set aside for reassembly later.
Note: Older units may have rivets instead of screws.
3. Unscrew the nut from the switch adjuster turnbuckle under the Microswitch arm. Set the nut aside for reassembly later.
4. To disconnect the cable connection, remove the adjuster nut from the turnbuckle attached to the Riser Cable and set it aside for reassembly later.
5. Pull the turnbuckle down out of the hole in the riser shuttle.
6. Remove the Riser Cable by pulling it up through the conduit connector at the top of the unit.
7. Remove the Sub-Top Assembly (see page 20). Remove rivet debris and any other foreign objects from the Liner.
8. Replace Sub-Top Assembly.

REPLACE RISER CABLE ASSEMBLY

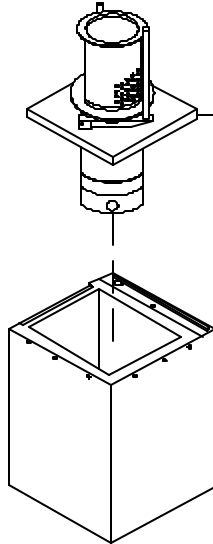
Note: Consult the SUITMATE PARTS AND ASSEMBLIES section in this manual to determine the exact parts and fasteners that will be required.

1. Place the SUITMATE in an upright position with the back of the unit facing out.
2. Drop the new Riser Cable (with turnbuckle) down through the conduit to the Microswitch.
3. Insert the switch adjuster turnbuckle through the hole in the Microswitch arm. Replace the nut (saved from step 3 above) on the turnbuckle.
4. Insert the turnbuckle on the new Riser Cable through the hole in the shuttle slide pin. Replace the turnbuckle adjuster nut (saved from step 4 above).
5. Replace Top Assembly (see page 18).
6. Push the Lid down. The Microswitch should *NOT* activate (click) until the Lid is approximately 1/4 of an inch from being totally depressed. Adjust the alignment by tightening (clockwise-will activate unit sooner) or loosening (counter-clockwise - will activate unit later) the turnbuckle on the bottom of the Riser Cable until the proper adjustment is obtained. If there is not enough adjustment in the turnbuckle, simply bend the Microswitch arm slightly to achieve the proper alignment. For further information refer to the MICROSWITCH ADJUSTMENT PROCEDURE section in this manual.
7. Provide power to the unit and, to make sure that it is functioning properly, test it.
8. Disconnect power to the unit.
9. Replace the Microswitch Box cover securing it with the two screws (from step 2 in the "Remove. . ." section above.)



DRIVE UNIT ASSEMBLY MOUNTING
CONSISTING OF (3) NUTS (AEC1224),
(3) LOCK WASHERS (AEC1238)

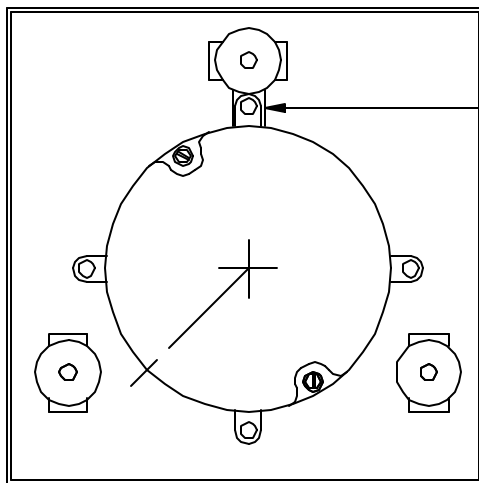
BOTTOM VIEW OF SUITMATE FRONT FACE



DRIVE UNIT ASSEMBLY
#EC24

CASE ASSEMBLY
#EC12

REMOVAL OF DRIVE UNIT



NOTE LOCATION OF ALUMINUM
SPACER. IT IS REQUIRED TO
KEEP THIS MOTOR MOUNT
IN POSITION.

BOTTOM VIEW OF DRIVE UNIT

Do this FIRST

- Make sure you have all the necessary parts and fasteners
 - Remove SUITMATE from Wall Mounting
 - Remove Top Assembly
 - Remove Sub-Top Assembly
-

REMOVE DRIVE UNIT ASSEMBLY

1. Place the SUITMATE on its face to expose the bottom of the unit.
2. Unscrew the 2 captive screws that secure the Motor end cap from the bottom of the Motor.
3. Remove the end cap and set it aside for reassembly later.
4. Remove the Microswitch Box cover. The cover is held on with 2 screws. Remove the cover and screws and set aside for reassembly later.
5. Disconnect the 3 wires connecting the motor to the unit by pulling the wire connectors from the L1 and L2 terminals on the Motor. Loosen the green grounding screw and disconnect the ground wire.
6. Cut off the metal wire connectors from the wires to allow the wires to be pulled through the 90° conduit connector.
7. Pull the wires through the 90° conduit connector by pulling them from the Microswitch Box about 2 to 3 inches.
8. Remove the 90° cable connector from the Motor by disconnecting the plastic cable conduit from the 90° conduit connector and unscrewing the 90° conduit connector from the Motor.
9. Remove the three sets of Shock Mount nuts and lock washers from the base of the SUITMATE. Set them aside for reassembly later.
10. From the top of the SUITMATE, grasp the sides of the Basket. Remove the Drive Unit by lifting the Drive Unit up on a slight angle.

Note: Be careful not to damage the black plastic Liner.

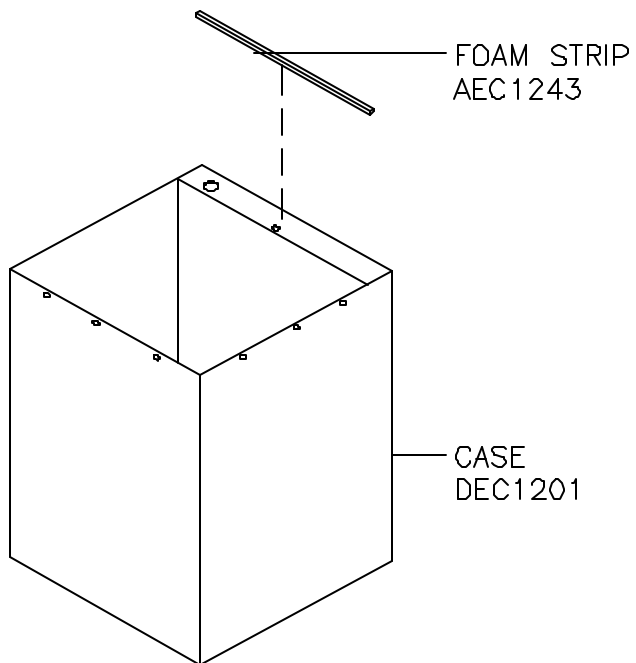
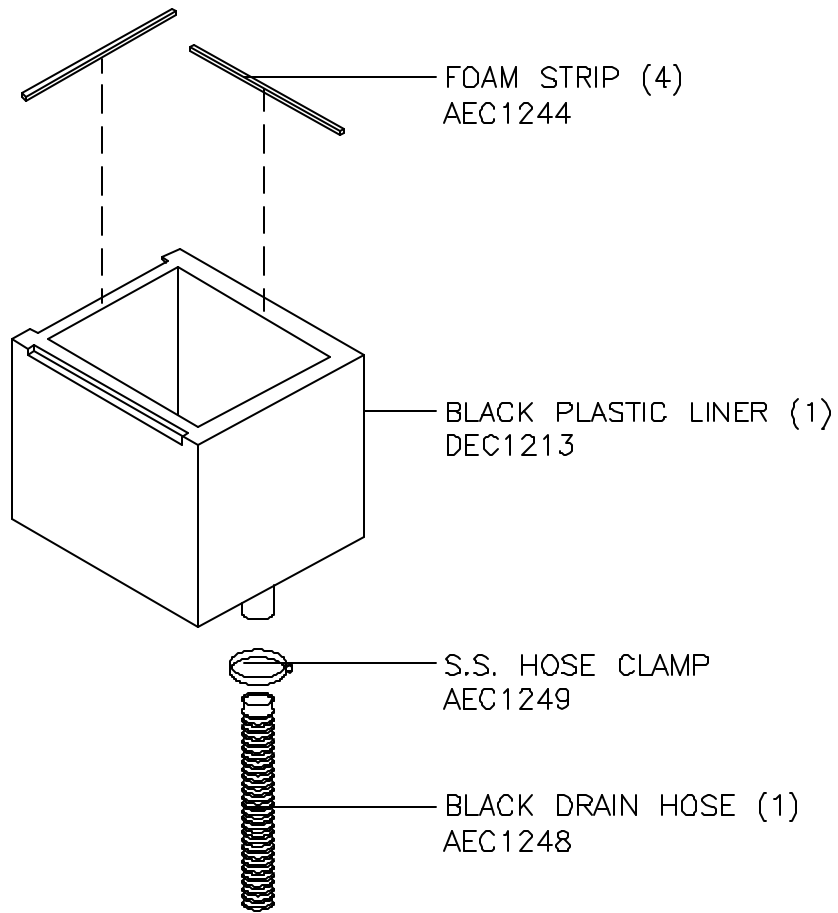
REPLACE DRIVE UNIT ASSEMBLY

Note: Consult the SUITMATE PARTS AND ASSEMBLIES section in this manual to determine the exact parts and fasteners that will be required.

1. Align the 3 Shock Mounts on the Drive Unit with the 3 holes in the Case and lower the Drive Unit into the Case making sure that the 3 Shock Mounts are in the appropriate holes in the Case.

Note: Be careful not to damage the Liner

2. Replace the 3 sets of Shock Mount nuts and lock washers on the Shock Mount threaded inserts that protrude through the Case.
3. Replace the 90° cable connector in the Motor.
Note: Be careful not to crossthread the threads on the cable connector
4. Push the 3 wires from the Microswitch Box up into the Motor.
5. Replace the cable conduit into the 90° connector.
6. Strip the 3 wires enough to install the appropriate metal wire connectors onto the wires.
7. Replace the 3 wire connectors to the appropriate terminals in the Motor: green wire to green screw, white wire to terminal L2, black wire to terminal L1.
8. Replace the Motor end cap with the 2 captive screws (from step 2 in the “Remove...” section above).



Do this FIRST

- Make sure you have all the necessary parts and fasteners
 - Remove SUITMATE from Wall Mounting
 - Remove Top Assembly
 - Remove Sub-Top Assembly
 - Remove Drive Unit Assembly
-

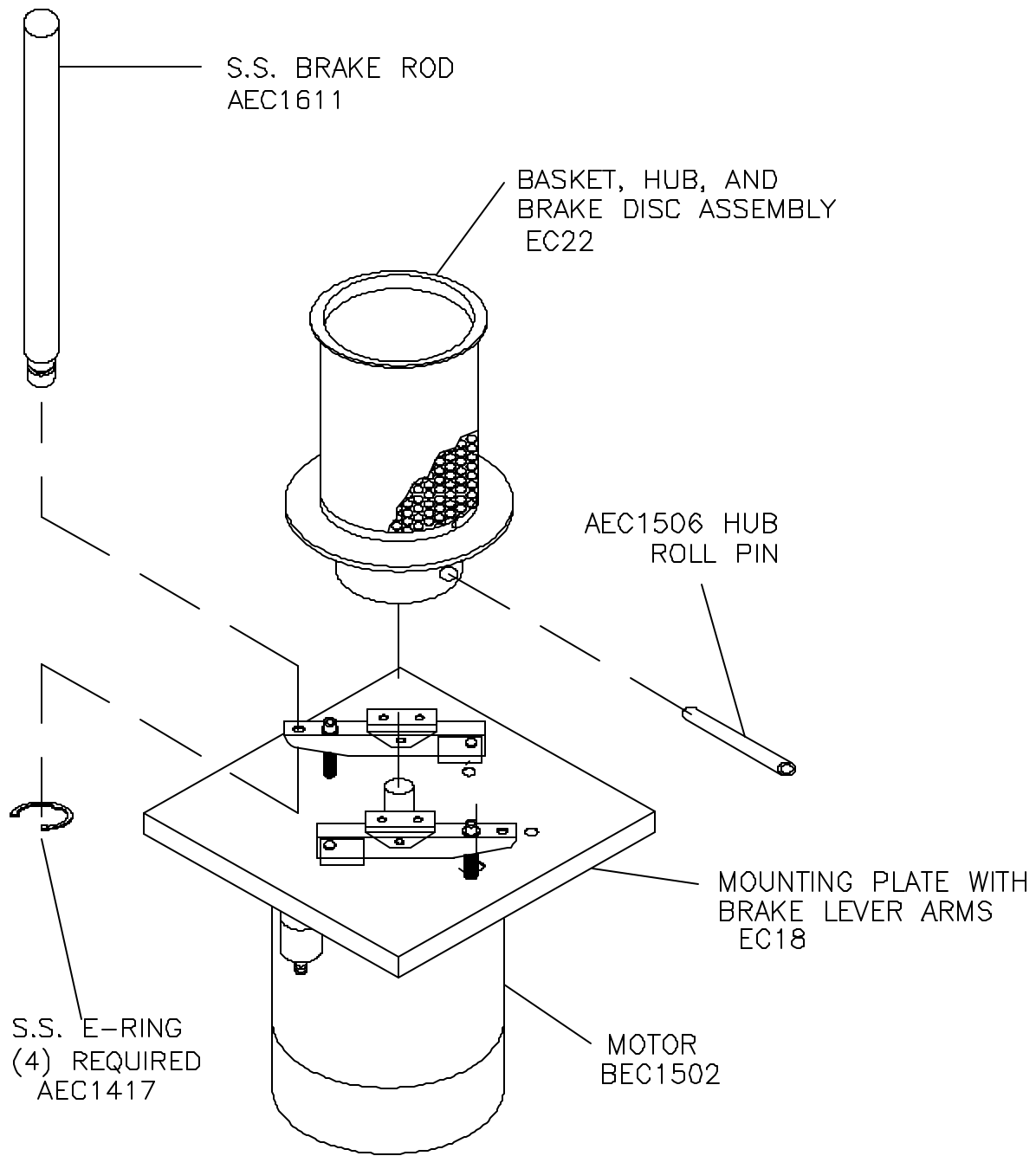
REMOVE LINER

1. Place the SUITMATE on its face to expose the bottom of the unit.
2. Unscrew the hose clamp that holds the plastic drain tube to the Liner drain hose outlet.
3. Remove the drain hose and set it aside for reassembly later.
4. Place the SUITMATE unit in an upright position.
5. From the top of the SUITMATE, grasp the lip of the black plastic Liner and pull straight up. Be careful not to damage the Liner.

REPLACE LINER

Note: Consult the SUITMATE PARTS AND ASSEMBLIES section in this manual to determine the exact parts and fasteners that will be required.

Replace the Liner by reversing the above procedure.



Do this FIRST

- Make sure you have all the necessary parts and fasteners
 - Remove SUITMATE from Wall Mounting
 - Remove Top Assembly
 - Remove Sub-Top Assembly
 - Remove Drive Unit
-

REMOVE BASKET, HUB, AND BRAKE DISC ASSEMBLY

1. Remove the Brake Rods from the Drive Unit by removing the 2 E-rings on each Brake Rod. Set the Brake Rods aside for reassembly later. *NEW* E-rings *MUST* be used in the reassembly process (Part # AEC1417).

Note: If Basket itself is damaged call Extractor Corporation at 800-553-3353.

2. Place a C-clamp over each Brake Lever and under the Motor Mounting Plate. Tighten the clamps to allow free rotation of the Motor shaft.

Note: Do not remove C-clamps.

3. Rotate the Motor Hub so that the hole for the spring pin that holds the Hub to the Motor shaft can be clearly seen.
4. Use a hammer and a drift punch to remove the spring pin that holds the Hub to the Motor shaft. A new pin is required for reassembly (Part #AEC1506).
5. Using a small pry bar or large screw driver, pry up on the Hub to free it from the Motor shaft. Rotate the Hub so that pressure is exerted evenly around the Hub and Motor shaft. Repeat until you can manually remove the Basket, Hub and Disc Brake Assembly from the Motor's shaft. Be careful not to damage the Hub or the Motor Mounting Plate. If the Hub is "frozen" to the Motor shaft, please call Extractor Corporation at 800-553-3353 and explain your problem.

Note: The center hole of the Motor Hub must be round to prevent damage to the unit and excessive noise.

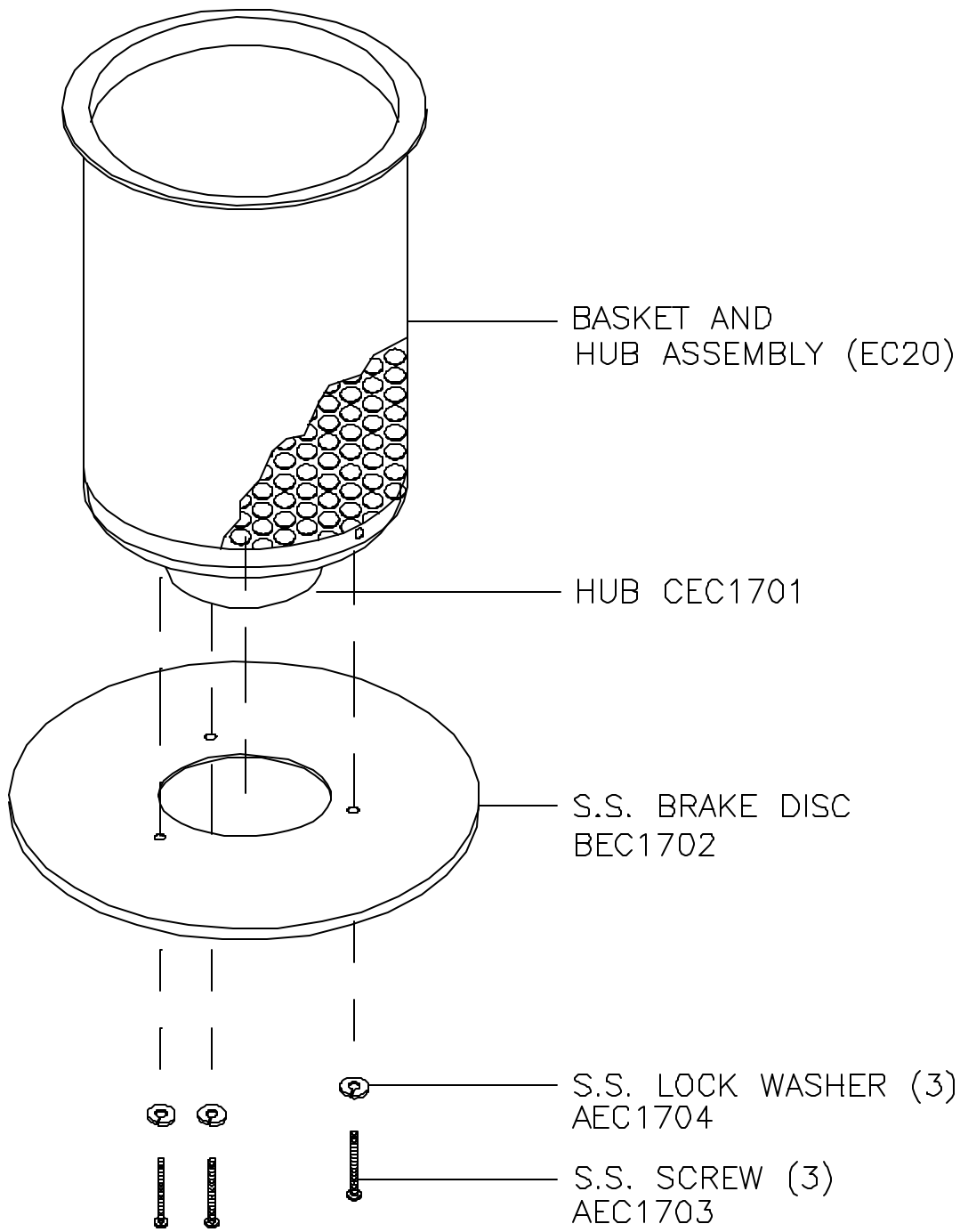
REPLACE BASKET, HUB, AND BRAKE DISC ASSEMBLY

Note: Consult the SUITMATE PARTS AND ASSEMBLIES section in this manual to determine the exact parts and fasteners that will be required.

1. Drive a *NEW* spring pin into the Motor Hub so that approximately $\frac{1}{16}$ inch of the spring pin can be seen entering into the center hole for the Motor of the Motor Hub.
2. Align the hole and spring pin in the Hub with the key way of the Motor Shaft
3. Push the Hub down on the Motor shaft till the hole in the spring pin and the Hub line up with the hole in the Motor shaft.

Note: It may be necessary to use a 2x4 piece of wood to tap the Hub down onto the Motor shaft.

4. Drive the spring pin through the Motor shaft so that the pin is flush with the Hub.
5. Remove the C-clamps.
6. Replace the Brake Rods onto the Drive Unit using 2 *NEW* E-rings on each Rod.



Do this FIRST

- Make sure you have all the necessary parts and fasteners
 - Remove SUITMATE from Wall Mounting
 - Remove Top Assembly
 - Remove Drive Unit
 - Remove Basket, Hub and Brake Disc Assembly
-

REMOVE BRAKE DISC

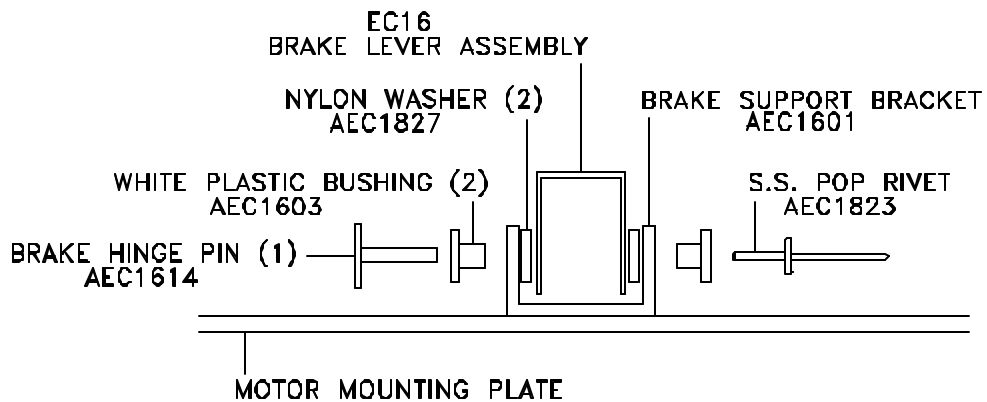
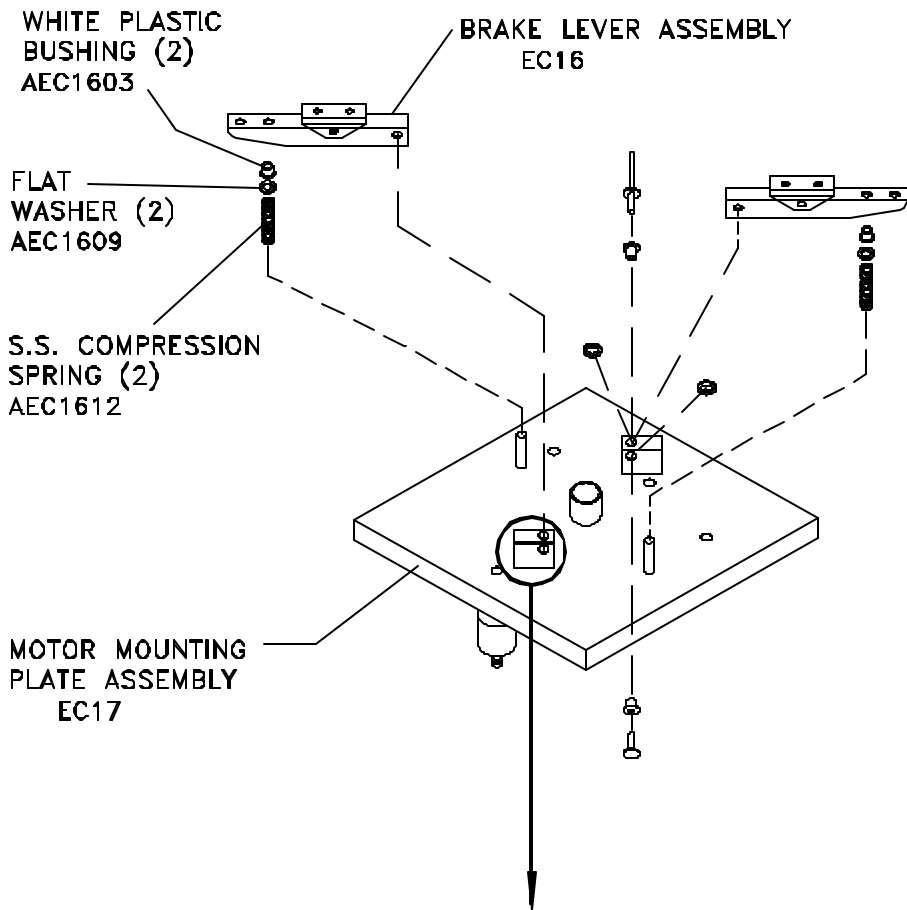
1. Remove the 3 screws and washers from the bottom of the Hub Assembly. Set them aside for reassembly later.
2. Remove the Brake Plate from the Hub. The Brake Disc may have to be tapped off using a small plastic hammer. Replace as appropriate.

Note: The center hole in the Hub must be circular to prevent machine damage and excessive noise.

REPLACE BRAKE DISC

Note: Consult the SUITMATE PARTS AND ASSEMBLIES section in this manual to determine the exact parts and fasteners that will be required.

Replace the Brake Disc by reversing the above procedure.



Do this FIRST

- Make sure you have all the necessary parts and fasteners
 - Remove SUITMATE from Wall Mounting
 - Remove Top Assembly
 - Remove Drive Unit
 - Remove Basket, Hub and Brake Disc Assembly
-

REMOVE BRAKE LEVER

Note: Make sure the C-clamp has been removed from the Brake Lever

1. Remove the Brake spring, washer, and plastic bushing. Set them aside for reassembly later.

Note: Pay attention to the location of the spring, washer and bushing. It is recommended that the Brake springs be replaced with new Brake springs.

2. Remove the rivet that holds the Brake Lever Assembly to the Brake support bracket on the Motor Mounting Plate.
 - Punch out center of each rivet with small drift punch
 - Drill out the rivet.
 - Chisel off the rivet head.
3. Remove and discard the Brake hinge pin.
4. Remove the old Brake Lever Assembly.

Note: Pay attention to the placement and alignment of the plastic bearings and plastic washers in the Brake Assembly. Set them aside for reassembly later.

Inspect the Brake Lever, springs and plastic bushings and washers for wear and replace with new ones if necessary.

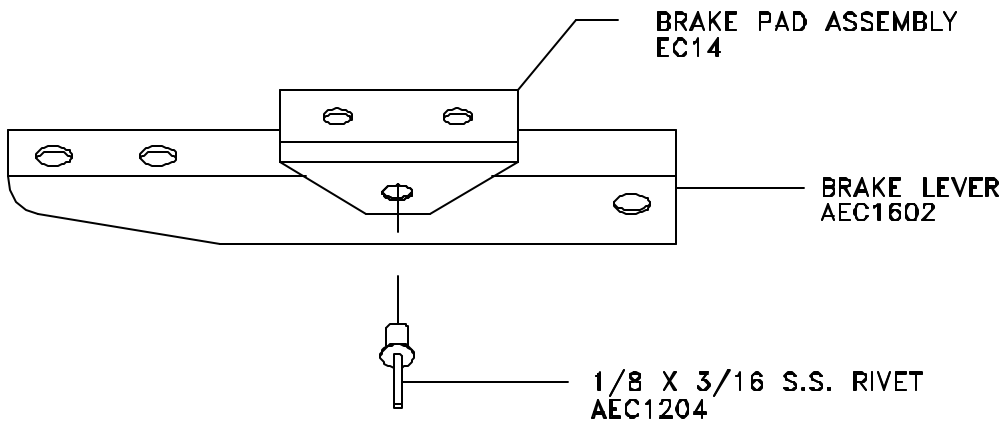
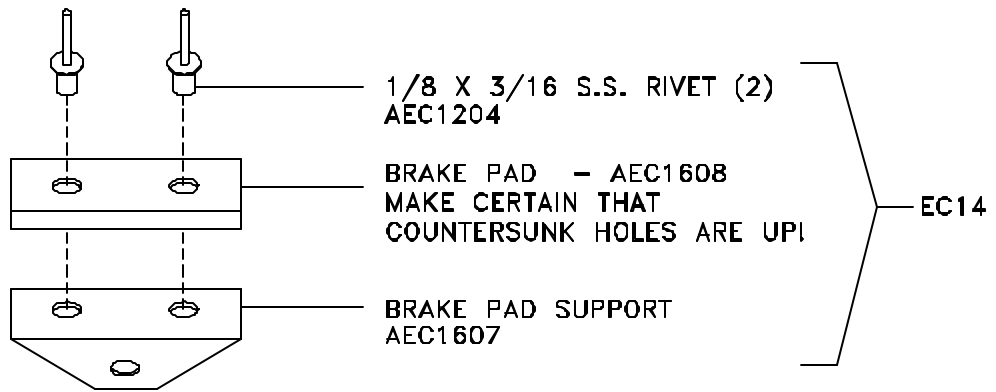
REPLACE BRAKE LEVER

Note: Consult the SUITMATE PARTS AND ASSEMBLIES section in this manual to determine the exact parts and fasteners that will be required.

Replace the Brake Lever by reversing the above procedure. *NEW* hinge pins and pop rivets must be used.

Note: Be sure to have the plastic bushings and washers in the proper locations.

Make sure to reinstall the C-clamp on the Brake Lever. The height of the Brake Pad should be less than 1 3/8 inches high measured from the Motor Mounting Plate.



BRAKE LEVER ASSEMBLY - EC16
TWO (2) REQUIRED

Do this FIRST

- Make sure you have all the necessary parts and fasteners
 - Remove SUITMATE from Wall Mounting
 - Remove Top Assembly
 - Remove Drive Unit
 - Remove Basket, Hub and Brake Disc Assembly
 - Remove Brake Lever
-

REMOVE BRAKE PAD

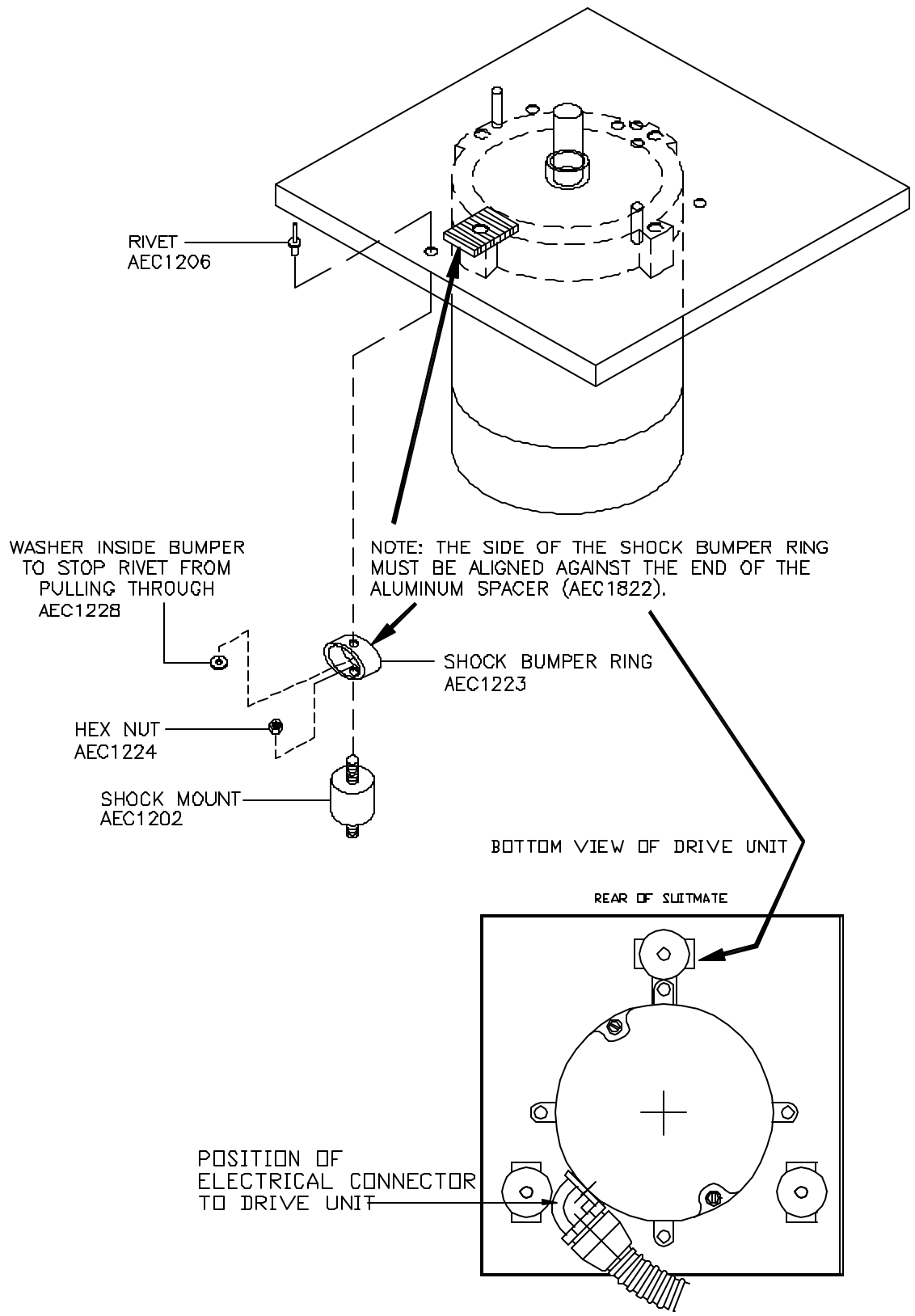
1. Remove the rivets that hold the Brake Pad support to the Brake Lever Assembly.
 - Punch out the center of each rivet with a small drift punch.
 - Drill out the rivet.
 - Chisel off the rivet head. Make sure the rivet is completely removed.
2. Remove the Brake Pad Assembly
3. Remove the rivets that hold the Brake Pad to the Brake support bracket.
 - Punch out the center of each rivet with a small drift punch.
 - Drill out the rivet.
4. Remove the old Brake Pad.

REPLACE BRAKE PAD

Note: Consult the SUITMATE PARTS AND ASSEMBLIES section in this manual to determine the exact parts and fasteners that will be required.

1. Align the holes of the new Brake Pad with the holes of the Brake Pad support.

Note: Make sure the Brake Pad has the countersunk holes on the top.
2. Rivet the Brake Pad to the Brake Pad support.
3. Align the holes on the side of the Brake Pad support with the holes in the side of the Brake Lever. The Brake Pad support should have a snug fit on the Brake Lever so that it does *NOT* move freely but still can be moved.
4. Rivet the Brake Pad support to the Brake Lever.



Do this FIRST

- Make sure you have all the necessary parts and fasteners
 - Remove SUITMATE from Wall Mounting
 - Remove Top Assembly
 - Remove Sub-Top Assembly
 - Remove Drive Unit Assembly
-

REMOVE SHOCK MOUNT

Remove the nut that secures the Shock Mount to the Shock Bumper Ring.

REPLACE SHOCK MOUNT

Note: Consult the SUITMATE PARTS AND ASSEMBLIES section in this manual to determine the exact parts and fasteners that will be required.

Replace the nut to secure the Shock Mount to the Shock Bumper Ring.

Do this FIRST

- Make sure you have all the necessary parts and fasteners
 - Remove SUITMATE from Wall Mounting
 - Remove Top Assembly
 - Remove Drive Unit
 - Remove Basket, Hub and Brake Disc Assembly
-

REMOVE SHOCK BUMPER RINGS

1. Remove Shock Mounts from the Shock Bumper Rings. Retain hardware for reassembly later.

Note: Examine the positions of the 3 Shock Bumper Rings. Two Bumper Rings should be parallel to each other. The third should be perpendicular to the other two.

2. Remove the rivet that holds the Shock Bumper Ring to the Motor Mounting Plate.

Note: Set aside the small washer that helps to secure the Shock Bumper Ring to the Mounting Plate.

REPLACE SHOCK BUMPER RINGS

Note: Consult the SUITMATE PARTS AND ASSEMBLIES section in this manual to determine the exact parts and fasteners that will be required.

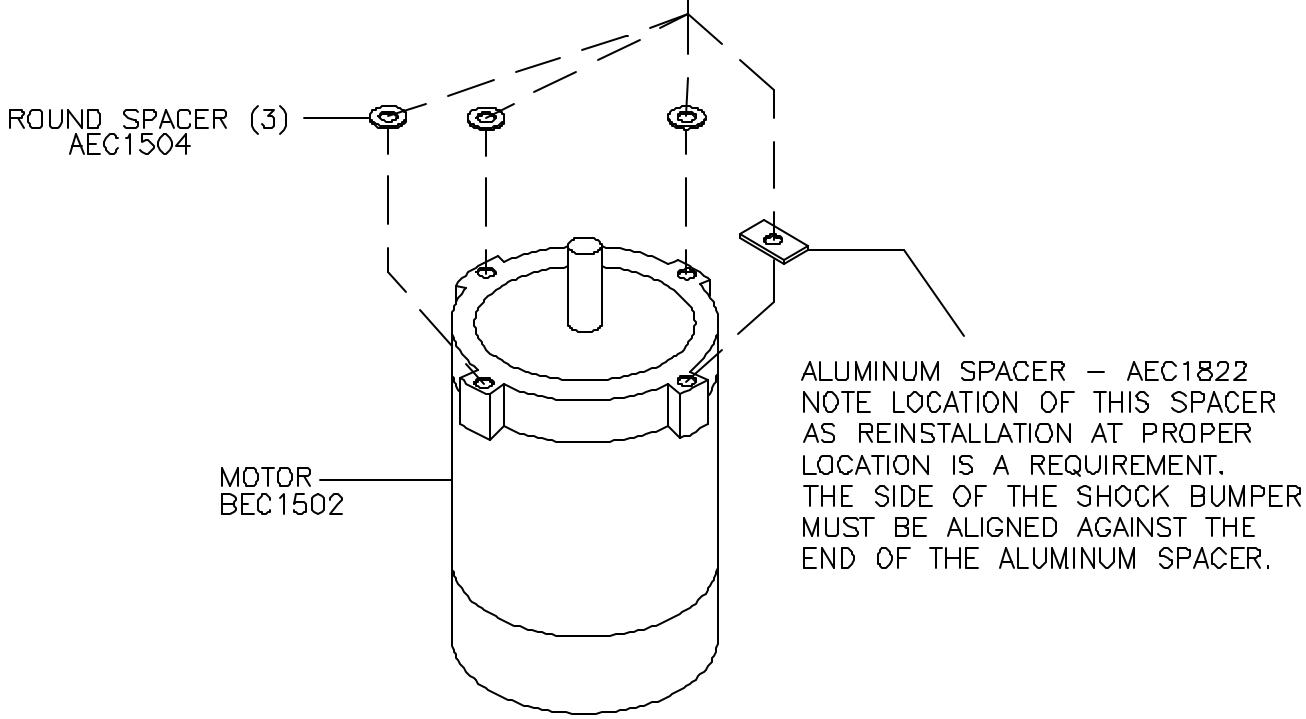
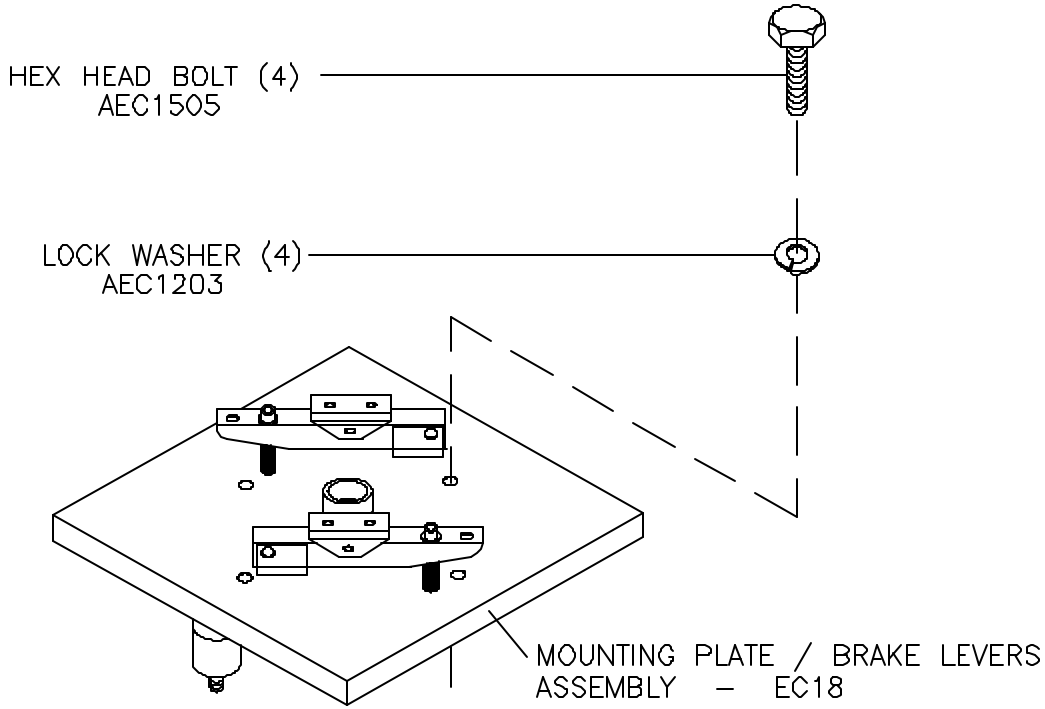
1. Rivet the Shock Bumper Ring to the Motor Mounting Plate.

Note: Be sure to use the small washer to fasten the Shock Bumper Ring to the Motor Mounting Plate.

Make sure the Shock Bumper Ring Assembly is properly aligned with the other two Bumper Rings. Failure to do so will prevent proper reassembly of the SUITMATE.

2. Apply the Silicone sealer on the rivet head on the top of the Motor Mounting Plate.

3. Use the nut (saved from step 1 in the “Remove...” section above) to attach the Shock Mount to the Shock Bumper Ring.



Do this FIRST

- Make sure you have all the necessary parts and fasteners
 - Remove SUITMATE from Wall Mounting
 - Remove Top Assembly
 - Remove Drive Unit
 - Remove Basket, Hub and Brake Disc Assembly
-

REMOVE MOTOR FROM MOUNTING PLATE

1. Remove the four bolts, lock washers, and spacers that hold the Motor to the Mounting Plate. Set aside bolts and spacers for reassembly later.

Note: Examine the placement of the 4 spacers, especially the rectangular spacer next to the Shock Bumper Ring. The rectangular spacer prevents the Shock Bumper Ring from moving.

Examine the location in the Motor for the 90° connector in relation to the three Shock Mounts. (Refer to drawing below.)

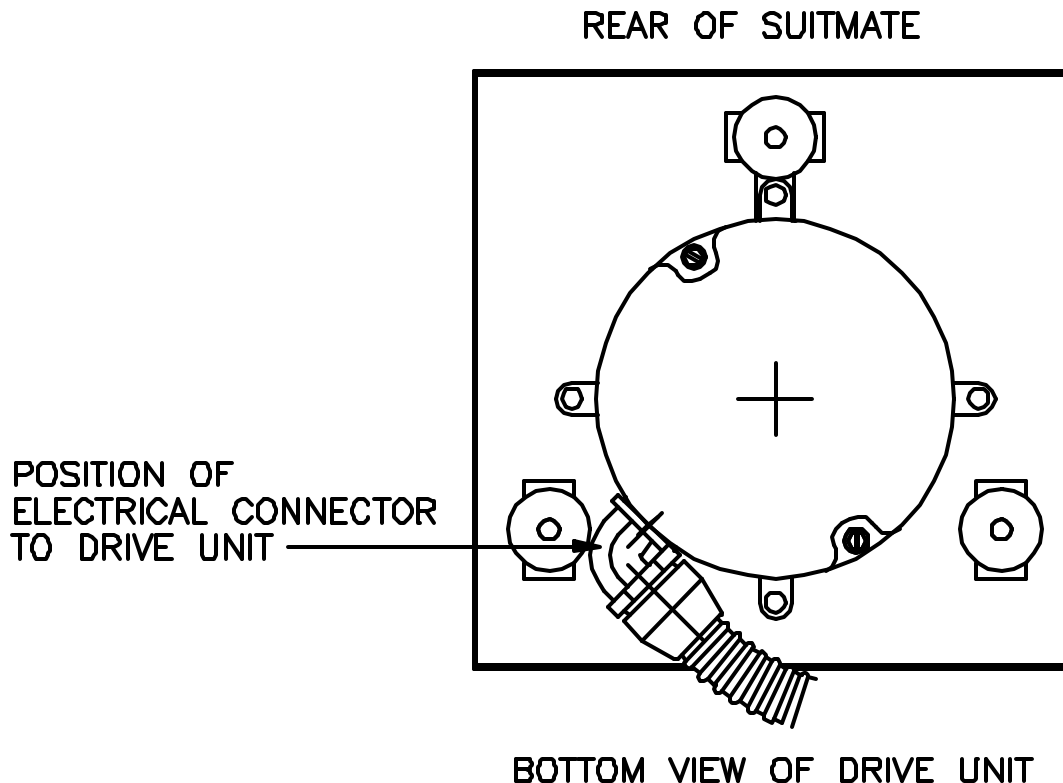
2. Remove the Motor and set aside.

REPLACE MOTOR

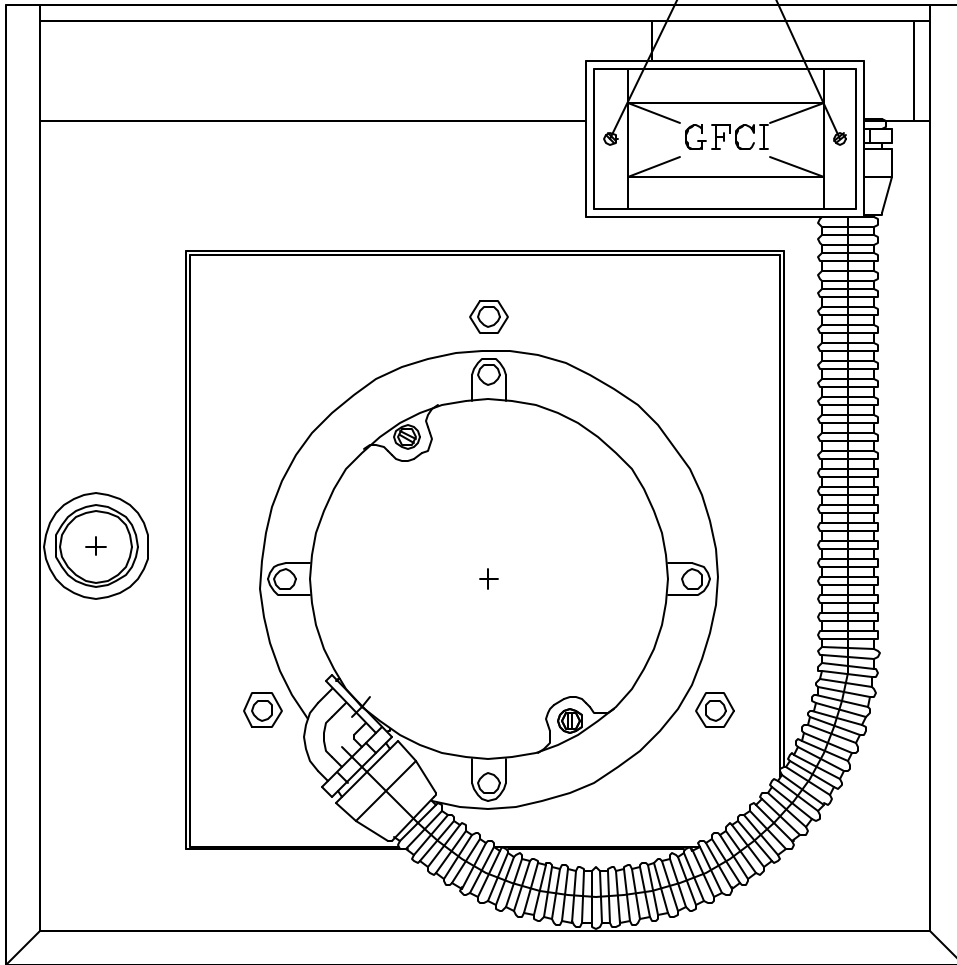
Note: Consult the SUITMATE PARTS AND ASSEMBLIES section in this manual to determine the exact parts and fasteners that will be required.

Replace the Motor by reversing the above procedure.

Note: When reassembling, use silicone sealer on the bolt and lock washer to preserve watertightness.



GFCI MOUNTING
SCREW (2)
AEC1820



BOTTOM VIEW OF SUITMATE

ELECTRICAL ASSEMBLIES

Note: Always turn off the power at the circuit breaker and disconnect the electrical connections before doing any work on the SUITMATE. Simply turning off a switch is NOT enough. Use only proper tools, test equipment, and work practices when servicing the SUITMATE.

If there are questions concerning proper tools, equipment or practices, please call the factory for recommendations at 800-553-3353. Due to critical tolerances, use only specified replacement parts. (See the SUITMATE PARTS AND ASSEMBLIES section in this manual.) Some disassembly and assembly procedures have not been included as the procedures would seem to be self-evident.

Do this FIRST

- Make sure you have all the necessary parts and fasteners

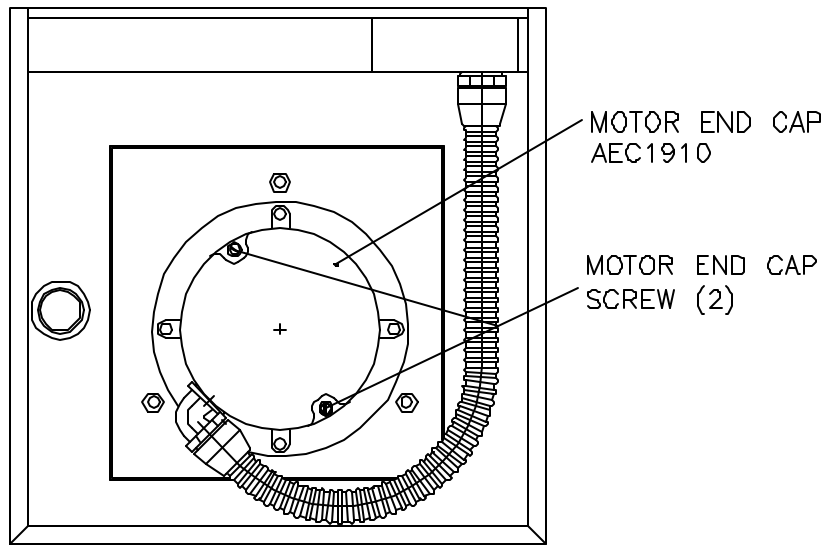
REPLACE GFCI

Note: Consult the SUITMATE PARTS AND ASSEMBLIES section in this manual to determine the exact parts and fasteners that will be required.

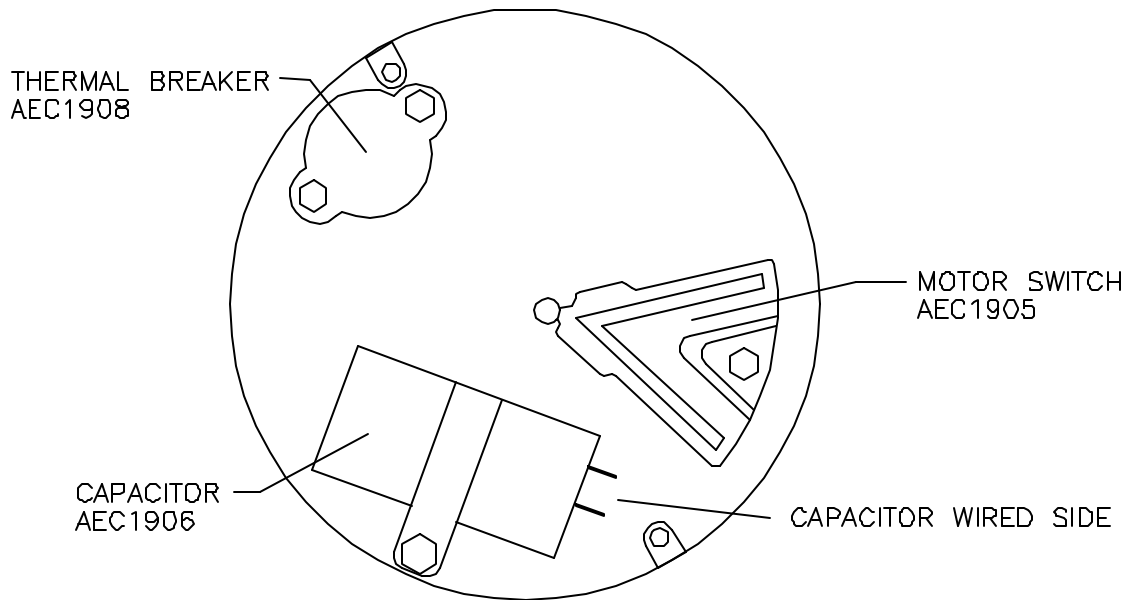
1. Make sure power to the unit is off.

Note: The GFCI can be serviced from the bottom of the unit without removing the unit from the wall.

2. Remove the cover of the weatherproof Junction Box which contains the GFCI. Set the cover and screws aside for reassembly later.
3. Remove the 2 screws attaching the GFCI to the Box. Set the screws aside for reassembly later.
4. Pull the GFCI out of weather proof Junction Box.
5. Remove the wires, one at a time, and put each wire in the matching position on the new GFCI.
6. Place the newly wired GFCI into the Box and secure it to the Box by tightening the 2 screws. Replace Cover.



BOTTOM VIEW OF SUITMATE



LOCATION OF MOTOR COMPONENTS

Do this FIRST

- Make sure you have all the necessary parts and fasteners
-

REPLACE MOTOR CAPACITOR

Note: Consult the SUITMATE PARTS AND ASSEMBLIES section in this manual to determine the exact parts and fasteners that will be required.

1. Make sure power to the unit is off.
Note: The Motor Capacitor can be serviced from the bottom of the unit without removing the unit from the wall.
 2. Remove the Motor end cap by loosening the 2 captive screws and setting the end cap aside.
 3. Remove the screw on the Motor's post that holds the Capacitor retaining piece and the plastic shield. Set the pieces of the shield aside.
Note: Carefully note the position and location of the old Capacitor as the new Capacitor must be installed in the same position and location as the old one.
 4. Remove the wires, one at a time, from the old Capacitor and put each wire in the matching position on the new Capacitor.
 5. Remove the old Capacitor and position the newly wired Capacitor in the Motor end, using the plastic shield and retaining piece. Replace and tighten the screw on the Motor post.
 6. Replace the Motor end cap.
-
-

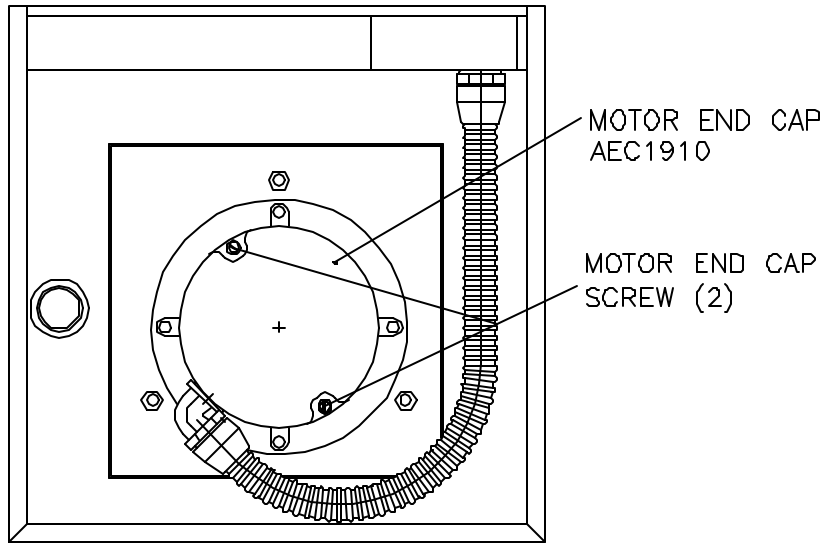
Do this FIRST

- Make sure you have all the necessary parts and fasteners
-

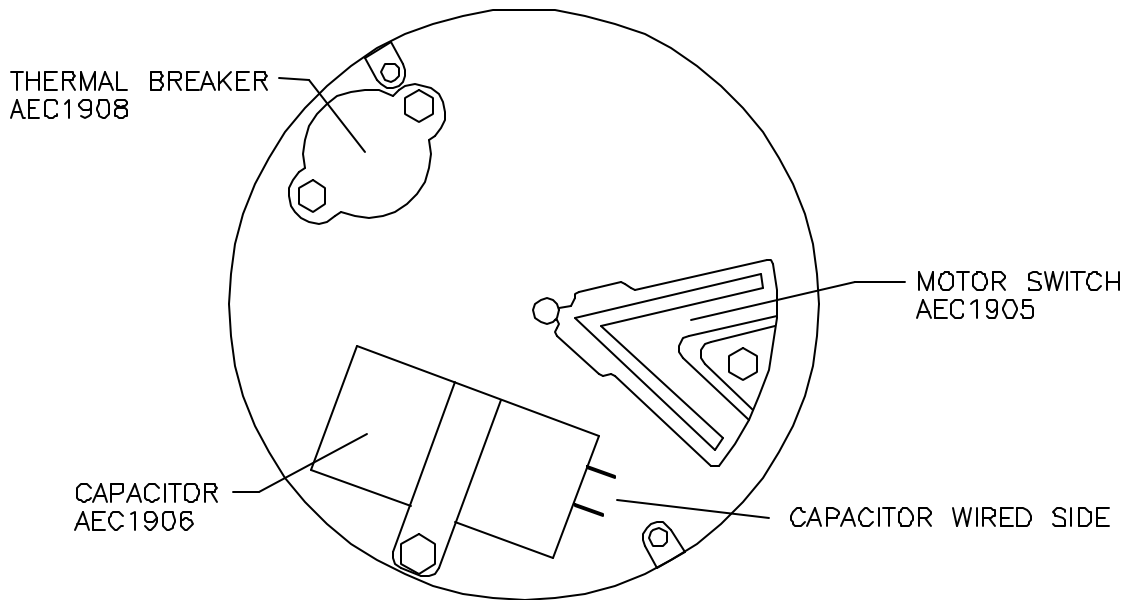
REPLACE THERMAL BREAKER

Note: Consult the SUITMATE PARTS AND ASSEMBLIES section in this manual to determine the exact parts and fasteners that will be required.

1. Make sure power to the unit is off.
Note: The Thermal Breaker can be serviced from the bottom of the unit without removing the unit from the wall.
2. Remove the end cap by loosening the 2 captive screws and setting the end cap aside.
3. Remove the hex head screw holding the Thermal Breaker in place. Set it aside for reassembly later.
Note: Carefully note the position and location of the old Thermal Breaker as the new Thermal Breaker must be installed in the same position and location as the old one.
4. Remove the wires, one at a time, from the Motor and replace them with the same color wires from the new Thermal Breaker. Note color and which post each is connected to.
5. Replace the old Breaker with the newly reconnected Thermal Breaker.
6. Position the Thermal Breaker in the Motor and replace and tighten the hex head screw from step 3 above.
7. Replace the Motor end cap.



BOTTOM VIEW OF SUITMATE



LOCATION OF MOTOR COMPONENTS

Do this FIRST

- Make sure you have all the necessary parts and fasteners
-

REPLACE MOTOR SWITCH

Note: Consult the SUITMATE PARTS AND ASSEMBLIES section in this manual to determine the exact parts and fasteners that will be required.

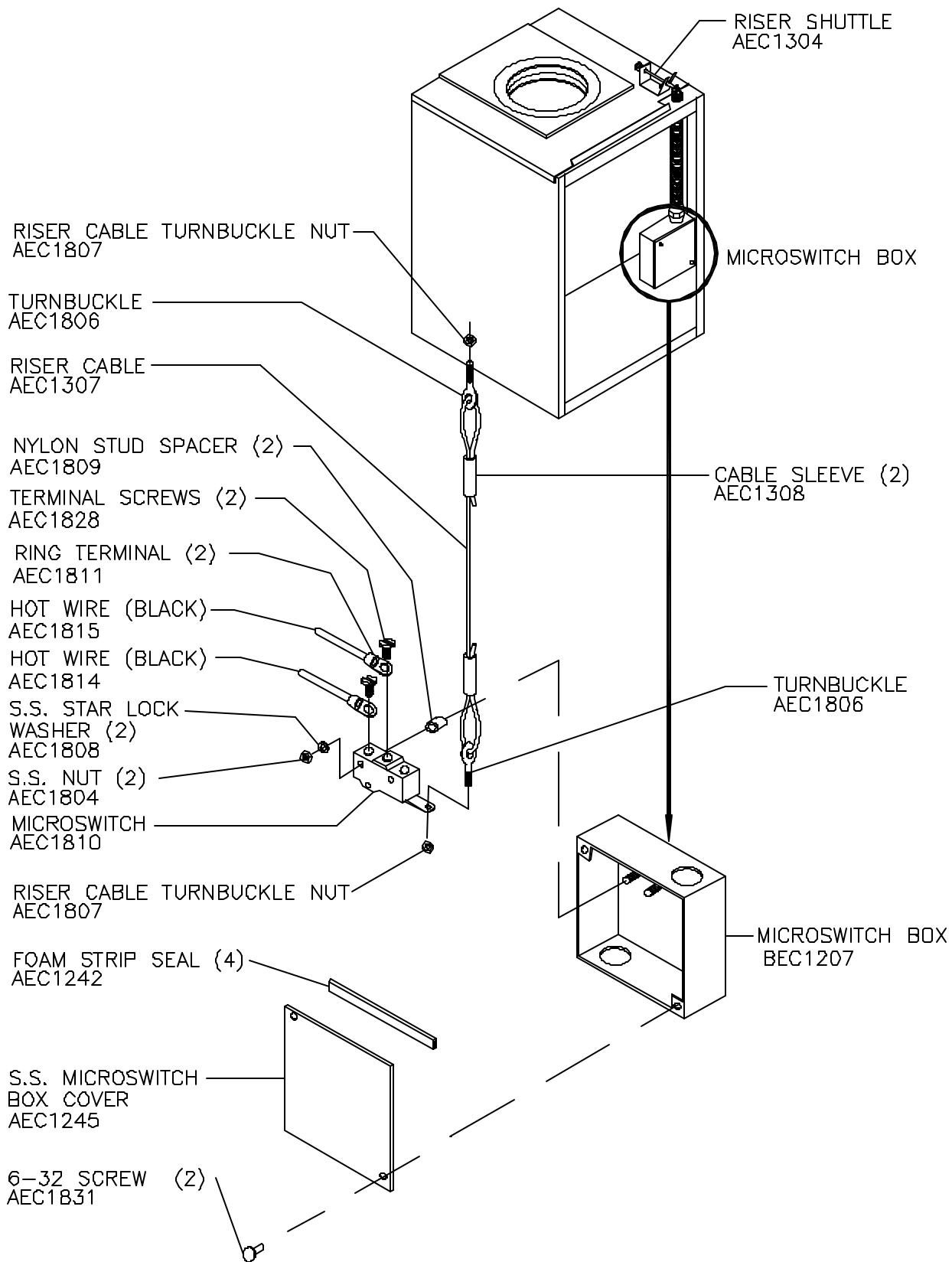
1. Make sure power to the unit is off.

Note: The Motor Switch can be serviced from the bottom of the unit without removing the unit from the wall.

2. Remove the end cap by loosening the 2 captive screws and setting the end cap aside.
3. Remove the hex head screw that holds the Motor Switch in place and set it aside.

Note: Carefully note the position and location of the old Motor Switch as the new Motor Switch must be installed in the same position and location as the old one.

4. Remove the wires, one at a time, from the Motor Switch. Put each wire in the matching position on the new Switch.
5. Replace the old Motor Switch with the newly wired Switch. Position the Switch in the Motor and replace and tighten the hex head screw from step 3 above.
6. Replace the Motor end cap.



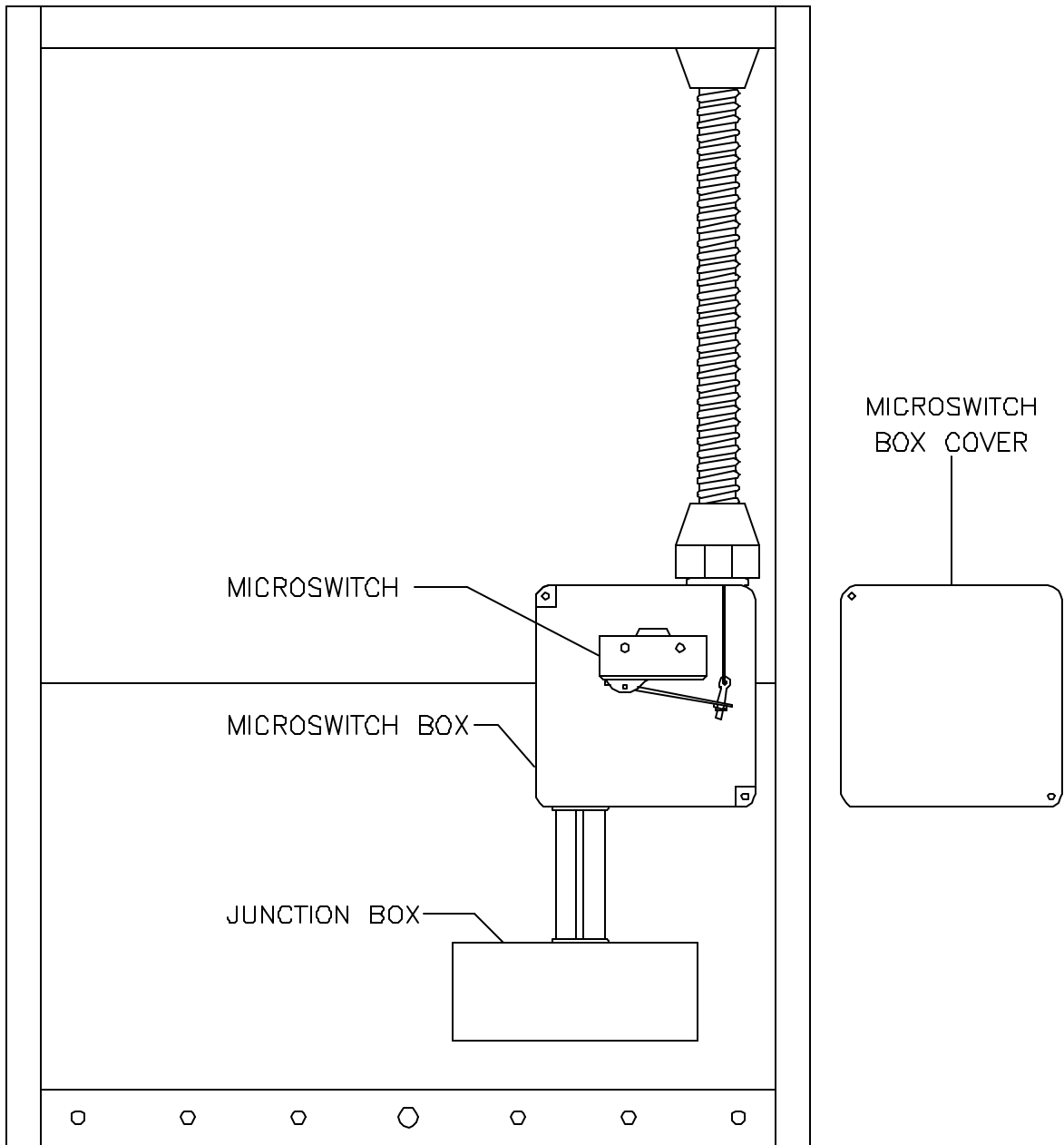
Do this FIRST

- Make sure you have all the necessary parts and fasteners
 - Remove SUITMATE from Wall Mounting
-

REPLACE THE MICROSWITCH

1. Place the SUITMATE on its front side.
2. Remove the Microswitch Box cover to expose the Microswitch and Riser Cable lower assembly by unscrewing the 2 screws. Set the screws aside for reassembly later.
Note: Older units may have rivets instead of screws.
3. Unscrew the nut on the Riser Cable turnbuckle to free the Microswitch's arm. Set the nut aside for reassembly later.
4. Remove the nuts and washers to access the Microswitch. Set these parts aside for reassembly later.
5. Remove the Microswitch from the mounting studs.
6. Remove the wires, one at a time, and put each wire in the matching position on the new Microswitch.
7. Place the newly wired Microswitch on the mounting studs. Make sure the switch arm extends to the right. Use the nuts and washers from step 4 above to secure the new Microswitch.
Note: Do not overtighten the nuts.
8. Put the threaded end of the Riser Cable turnbuckle through the hole in the arm of the Microswitch. Use the nut from step 3 above to secure the turnbuckle to the switch arm.
9. Refer to the SUITMATE MICROSWITCH ADJUSTMENT PROCEDURE in this manual to properly adjust the Microswitch..
10. After the Riser Cable is properly adjusted, replace the Microswitch Box cover and screw it in place.

WARNING Make sure the foam seal on the Microswitch Box cover is not damaged so that water cannot enter.



REAR OF SUITMATE
(SHOWN WITH COVER REMOVED FROM MICROSWITCH BOX)

SUITMATE MICROSWITCH ADJUSTMENT PROCEDURE

Depress the Lid on the top of the unit and listen for the faint click (activating) of the Microswitch. If the Microswitch does not activate or if it activates before the Lid is ¼ inch from being fully depressed, there is probably a problem with the alignment of the Microswitch. The following procedure will solve the alignment problem. Please consult the illustration (found on opposite page) showing the back of the SUITMATE unit to identify the parts that you will need to recognize.

REMOVAL OF DEFECTIVE SUITMATE

1. Shut off power to the SUITMATE circuit at the power panel.

CAUTION *Make sure the main electrical power to the unit is turned off before beginning work on the SUITMATE.*

2. If the SUITMATE was installed with hard plumbing (P-trap), disconnect the waste outlet from the unit.
3. Remove the cover of the weather proof Junction Box which contains the GFCI; remove the GFCI mounting screws; disconnect the power feed lines from the GFCI terminals marked "LINE" and disconnect the ground wire. Leave the GFCI fastened to the unit. Retain the weatherproof Junction Box cover and mounting screws, and the GFCI mounting screws, for reinstallation.
4. Disconnect the power feed liquid tight raceway from the Junction Box.
5. Remove the lower fasteners anchoring the unit to the wall.
6. Remove the SUITMATE from the Mounting Bracket by firmly grasping the sides of the Case bottom and gently lifting straight up until the unit clears the upper back lip of the Mounting Bracket. Take the unit to a work bench.

CHECKING MICROSWITCH ALIGNMENT

1. Locate the Microswitch Box.
2. Remove the Microswitch Box cover by unscrewing the two screws. Set these parts aside for reassembly later.

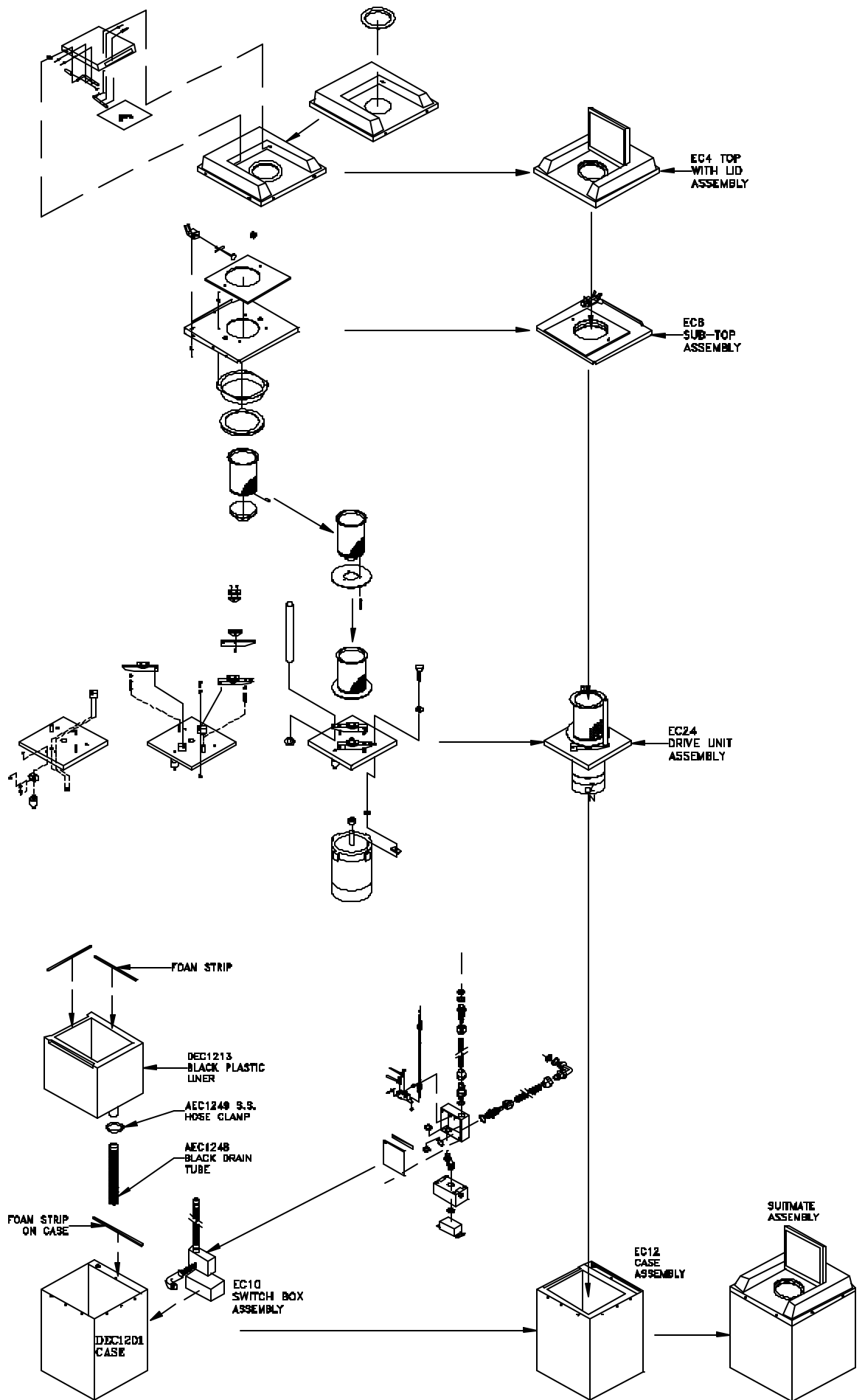
Note: Older units may have rivets instead of screws.

3. With the cover removed the Microswitch is revealed. Push the Lid down on the top of the unit to determine if the Riser Cable that runs from the top of the unit to the Microswitch arm is pulling up on the arm. If there is no movement the actuator screw in the top may be broken. Please call the Extractor Corporation at 800-553-3353 and explain your problem.
4. If the Cable does pull up on the Microswitch arm, then the alignment can be adjusted. First, push the lid down; the Microswitch should *NOT* activate (click) until the Lid is approximately ¼ of an inch from being totally depressed. Adjust the alignment by tightening (clockwise-will activate unit sooner) or loosening (counter-clockwise-will activate unit later) the turnbuckle on the bottom of the Riser Cable until the proper adjustment is obtained. If there is not enough adjustment in the turnbuckle, simply bend the Microswitch arm slightly to achieve the proper alignment.
5. Provide power to the unit and, to make sure that it is functioning properly, test it.
6. Disconnect the power to the unit.
7. Replace the Microswitch Box cover fastening it with the two screws saved from step 2 above.

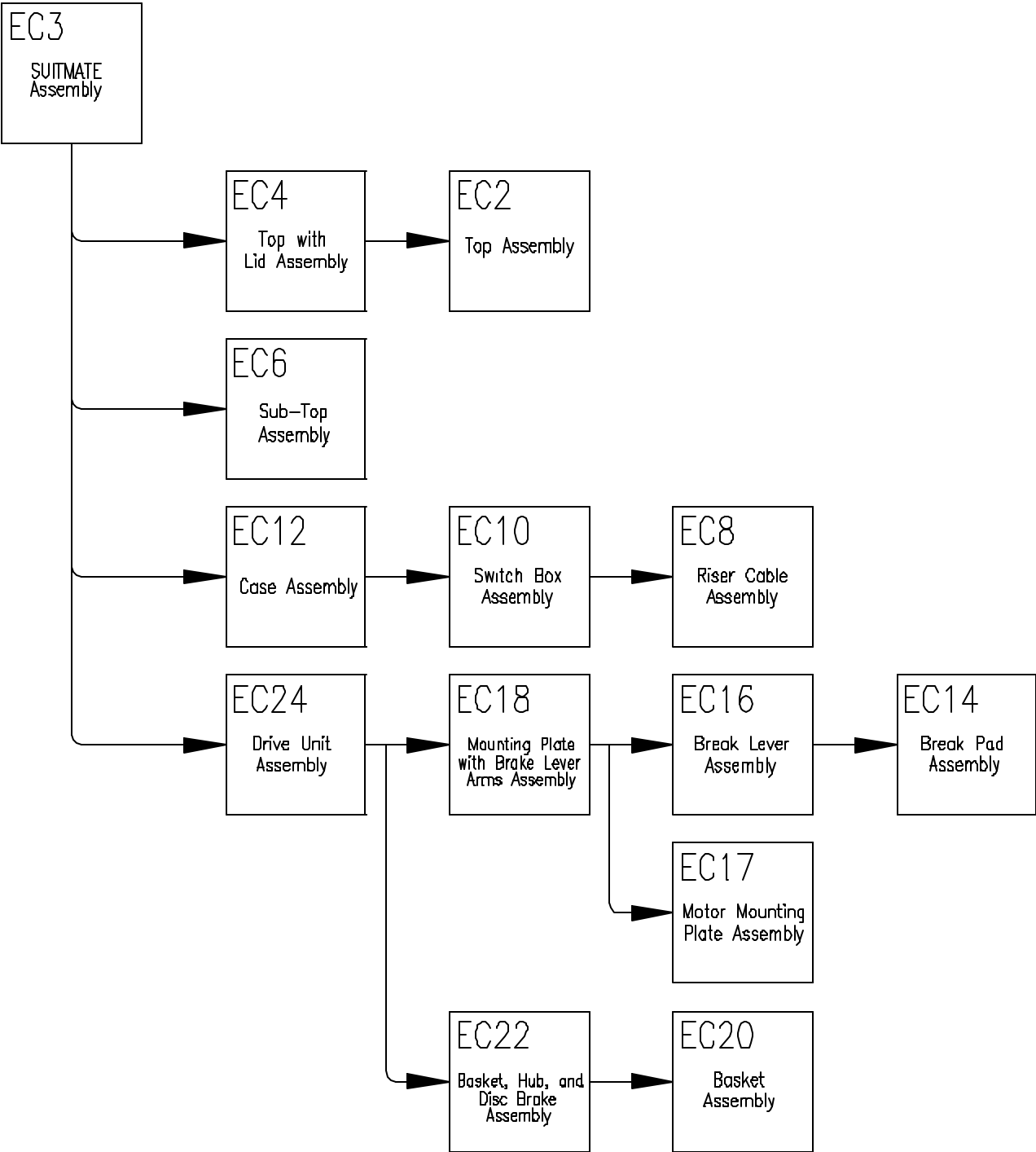
REPLACE THE SUITMATE

Return the SUITMATE unit to its proper location and reconnect the unit by reversing the above procedure.

If you have further difficulties or want additional information, please call the Extractor Corporation at 800-553-3353.



SUITMATE ASSEMBLIES



SUITMATE® PARTS AND ASSEMBLIES

October 2001

Parts Required Per SUITMATE®

PART NUMBER	DESCRIPTION	QUANTITY
EC2	TOP ASSEMBLY	1
CEC1401	Black Plastic Top	1
AEC1406	S.S. Trim Ring	1
EC4	TOP ASSEMBLY WITH LID	1
EC2	Top Assembly	1
CEC1402	S.S. Lid	1
AEC1354	Rubber Lid Bumper	2
BEC1403	S.S. Hinge Pin—Left	1
BEC1404	S.S. Hinge Pin—Right	1
AEC1410	S.S. Rivet 1/8 x 3/8 - Secures Hinge Pin to Lid	4
AEC1416	Black O-Ring—Separates Lid From Top	2
AEC1405	Actuator Screw—In Left Hinge Pin	1
AEC1350	Neoprene Tube—covers Actuator Screw	1
AEC1237	Lid Operating Instructions	1
AEC1235	Lift Lid Label (Comes with AEC1237)	1
AEC1205	Black Aluminum Rivet—Secures Top To Case	6
EC6	SUB-TOP ASSEMBLY	1
CEC1301	S.S. Sub-Top	1
BEC1303	S.S. Riser Bracket	1
AEC1305	Teflon Tape-covers riser bracket surface	1
AEC1204	S.S. Rivet x 3/16 - Secures Riser Bracket To Sub-Top	2
AEC1304	S.S. Riser Shuttle	1
AEC1418	Shuttle Slide Pin—Roll Pin in Riser Shuttle	1
AEC1417	S.S. E-Ring—Secures Shuttle in Bracket	1
AEC1824	Sub-Top Retainer Ring	1
AEC1204	S.S. Rivet 1/8 x 3/16 - Secures Retainer Ring to Sub-Top	4
AEC1829	Foam Retainer Ring—Insert In Sub-Top Retainer Ring	1
AEC1352	Sub-Top Gasket—Cover Front Top Portion of Sub-Top	1
AEC1240	Aluminum Rivet 3/16 x 1/8 - Secures Sub-Top Assembly to Case	3
EC8	RISER CABLE ASSEMBLY	1
AEC1307	Riser Cable	1
AEC1308	Cable Sleeve	2
AEC 1806	Switch Adjuster Turnbuckle - Secures both ends of Riser Cable	2
AEC1807	Switch Adjuster Nut	2

PART NUMBER	DESCRIPTION	QUANTITY
EC10	SWITCH BOX ASSEMBLY	1
EC8	Riser Cable Assembly	1
BEC1207	S.S. Microswitch Box	1
AEC1245	S.S. Microswitch Box Cover	1
AEC1242	Foam Strip Seal- On Microswitch Box Cover	4
AEC1810	Microswitch	1
AEC1809	Nylon Stud Spacer—Separates Microswitch from Box	2
AEC1808	S.S. Star Lock Washer 6/32—Secures Microswitch Box	2
AEC1804	S.S. Stud Nut 6/32—Secures Microswitch to Box	2
AEC1356	Cable Conduit—Plastic—Switch Box	1
AEC1358	Conduit Connector—Plastic—Connect Conduit/Switch Box	1
AEC1214	Conduit Lock Nut—Secures Connector To Switch Box	1
AEC1814	Hot Wire—Black—Microswitch To Motor	1
AEC1815	Hot Wire—Black—Microswitch to GFCI	1
AEC1811	Ring Terminal—Secures Hot Wires to Microswitch	2
AEC1828	Microswitch Screw—Secures Hot Wires to Microswitch	2
AEC1830	Microswitch Lock Washer—Secures Hot Wires to Microswitch	2
AEC1831	6-32 x 3/8 Screw —Secures cover to Box	2
EC12	CASE ASSEMBLY	1
EC10	Switch Box Assembly	1
DEC1201	S.S. Case	1
DEC1213	Black Plastic Liner	1
AEC1243	Foam Strip Seal—Case—On Back Top Of Case	1
AEC1244	Foam Strip Seal—Liner—On Top of Liner	4
AEC1204	S.S. Rivet 1/8 x 3/16—Secures Switch Box to Case	3
AEC1358	Conduit Connector—Plastic—Connects Conduit To Case	1
AEC1214	Conduit Lock Nut—Secures Connector To Case	1
EC14	BRAKE PAD ASSEMBLY	2
AEC1607	Brake Pad Support	1
AEC1608	Brake Pad	1
AEC1204	S.S. Rivet 1/8 x 3/16—Secures Brake Pad Assembly to Lever Arm	2
EC16	BRAKE LEVER ASSEMBLY	2
EC14	Brake Pad Assembly	1
AEC1602	Brake Lever Arm	1
AEC1204	S.S. Rivet 1/8 x 3/16—Secures Brake Pad Assembly to Lever Arm	2
EC17	MOTOR MOUNTING PLATE ASSEMBLY	1
CEC1501	Motor Mounting Plate	1
AEC1512	Brake Spring Guide Pin (Comes with CEC1501)	2
AEC1503	Motor Shaft Protector	1

PART NUMBER	DESCRIPTION	QUANTITY
	MOTOR MOUNTING PLATE ASSEMBLY - Continued	
AEC1601	Brake Support Bracket	2
AEC1823	S.S. Rivet 5/32 x 1/8—Secures Support To Plate	4
AEC1223	Shock Bumper Ring	3
AEC1228	S.S. Flat Washer #10—Secures Bumper To Plate	3
AEC1206	S.S. Rivet 3/16 x 1/4—Secures Bumper To Plate	3
AEC1202	Black Shock Mount	3
AEC1224	S.S. Nut 5/16 (3) - Secures Shock Mount To Bumper	3
EC18	MOUNTING PLATE/BRAKE LEVERS ASSEMBLY	1
EC17	Motor Mounting Plate Assembly	1
EC16	Brake Lever Assembly	2
AEC1614	Brake Hinge Pin—Secures Lever To Brake Support	2
AEC1603	White Plastic Bushing—Separates Pin/Lever	4
AEC1827	Nylon Washer—Separates Bracket/Support	4
AEC1823	S.S. Rivet 5/32 x 1/8—Secures Pin To Bracket	2
AEC1612	S.S. Compression Spring	2
AEC1609	S.S. Flat Washer 1/4—Separates Spring/Bushing	2
AEC1603	White Plastic Bushing—Separates Washer/Lever	2
EC20	BASKET ASSEMBLY	1
CEC1705	S.S. Basket (Comes with EC20)	1
BEC1708	S.S. Basket Cap (Comes with EC20)	1
EC22	BASKET AND DISC BRAKE ASSEMBLY	1
EC20	Basket Assembly	1
CEC1701	Aluminum Hub	1
BEC1702	S.S. Brake Disc—Machined	1
AEC1610	S.S. Basket Roll Pin—Secures Basket To Hub	3
AEC1703	S.S. Pan Head Screw 8/32 x 1/2—Secures Basket To Hub	3
AEC1704	S.S. Lock Washer #8—Separates Screw From Hub	3
EC24	DRIVE UNIT ASSEMBLY	1
EC18	Mounting Plate/Brake Levers Assembly	1
EC22	Basket and Disc Brake Assembly	1
BEC1502	Motor	1
AEC1504	S.S. Motor Mount Spacer—Separates Motor From Plate	3
AEC1822	Special Aluminum Spacer—Separates Motor From Plate	1
AEC1505	S.S. Hex Head Bolt 3/8-16 x 3/4—Secures Motor To Plate	4
AEC1203	S.S. Spit Lock Washer 3/8—Separates Bolt From Plate	4
AEC1506	Hub Roll Pin—Secures Hub To Motor Shaft	1
AEC1611	S.S. Brake Rod	2
AEC1417	S.S. E-Ring—Secures Brake Rod To Brake Lever	4

PART NUMBER	DESCRIPTION	QUANTITY
EC3	SUITMATE ASSEMBLY	1
EC12	Case Assembly	1
EC24	Drive Unit Assembly	1
EC6	Sub-Top Assembly	1
EC4	Top Assembly with Lid	1
AEC1231	SUITMATE Color Strip	1
AEC1605	Rubber Brake Tip	2
AEC1218	GFCI Junction Box	1
AEC1220	GFCI Junction Box Hole Plug	1
AEC1247	GFCI Junction Box Cover	1
AEC1251	GFCI Junction Box Cover Screw 6/32 x 1/2 oval	1
AEC1821	Faceless GFCI with Screws	1
AEC1820	GFCI Screw 6/32 x 3/4 Phillips	2
AEC1233	GFCI Junction Box Label	1
AEC1212	Offset Connector—Connects Junction Box to Microswitch Box	1
AEC1214	Conduit Lock Nut—Secures Offset Connector	2
AEC1357	Cable Conduit—Plastic—Connects Switch Box to Motor	1
AEC1360	Conduit Connector—90—Plastic—Connect Conduit/Motor	1
AEC1358	Conduit Connector—Plastic—Connect Conduit/Switch Box	1
AEC1214	Conduit Lock Nut—Secures Connector To Switch Box	1
AEC1813	Neutral Wire—White—Connects Motor To GFCI	1
AEC2061	Ground Wire—Green—Connects Motor To GFCI	1
AEC1817	Motor Disconnect—Connects Wires To Motor	2
AEC1819	Flange Fork Connector—Connects Ground To Motor	1
AEC1819	Flange Fork Connector—Connects Wires To GFCI	3
AEC1224	S.S. Nut—5/16—Secures Shock Mounts To Case	3
AEC1238	S.S. Split Lock Washer—5/16—Secures Shocks To Case	3
AEC1248	Black Drain Tube	1
AEC1249	S.S. Hose Clamp —Secures Drain Tube To Black Liner	1
AEC1236	Serial Number Identification Label	1
	MOTOR PARTS AND OTHER MATERIALS	
AEC1905	Motor Switch	0
AEC1906	Motor Capacitor	0
AEC1907	Motor End Frame	0
AEC1908	Motor Thermal Breaker	0
AEC1909	Motor Bearing	0
AEC1910	Motor End Cap	0
AEC1102	S.S. Wall Mount Bracket	1
AEC1108	Wall Sign—Combination	1
AEC1246	Hub Removal Tool	0



Extractor Corporation

725 Martin Drive
Post Office Box 99
South Elgin, Illinois 60177
(847) 742-3532
Fax: (847) 742-3552
1-800-553-3353

WARRANTY

EXTRACTOR CORPORATION ("EC") warrants to the purchaser of their manufactured equipment that for one (1) year after purchase the equipment shall be free from any defects in workmanship.

Purchaser agrees that as a pre-condition to any EC liability hereunder, purchaser shall fully inspect all goods immediately upon delivery to purchaser and shall give EC written notice of any claim or purported defect within ten (10) days after discovery of such defect. As a further pre-condition to any EC liability hereunder, purchaser shall return said purportedly defective equipment, freight repaid, to the plant of the manufacturer. EC shall inspect all returned equipment, and, if said equipment is found defective, shall, at its option as purchase's sole and exclusive remedy, repair or replace such equipment or any defective component or part thereof which proves to be defective, or refund the net purchase price paid by the original purchaser. Alterations or repairs by others or operation of such equipment in a manner inconsistent with EC accepted practices and all operating instructions shall void this warranty. EC shall not be liable for defects caused by the effects of normal wear and tear, erosion, corrosion, fire or explosion.

EC's sole and exclusive liability under this warranty is to the original purchaser and shall not exceed the lesser of the cost of repair, cost of replacement, or refund of the net purchase price paid by the original purchaser, EC is not liable for any other losses, damages, or costs of delays, including incidental or consequential damages. EC SPECIFICALLY MAKES NO WARRANTIES OR GUARANTEES, EXPRESSED OR IMPLIED, INCLUDING THE WARRANTIES OR MERCHANTABILITY OR FITNESS FOR A PARTICULAR PURPOSE OR USE, OTHER THAN OR WHICH EXTEND THOSE WARRANTIES EXPRESSED HEREIN.

Extractor Corporation
725 Martin Drive
Post Office Box 99
South Elgin, Illinois, U.S.A. 60177
Phone: (847) 742-3532
U.S.A. and Canada: 1-800-553-3353
Fax: (847) 742-3552